

ARTOS
ENGINEERING COMPANY

Machine Model	45-048 Manual Cable Cutter	Owners Manual		
PN	6-119880	Rev. 1	Date	23 Sept 2008



Artos Engineering Company
21605 Gateway Ct.
Brookfield, WI 53045
Phone 1 262 252-4545 Fax 1 262 252-4544
www.artosnet.com
service@artosnet.com

Wire & Cable Cutter

Use:

Intended for cutting all types of copper and aluminum wires and cables up to 5/8" diameter. There is an extra provision for handling diameters up to one inch; however, this is limited to bundles of very small wires, such as magnet wire or telephone cable. It is not intended for a one-inch diameter solid conductor cable, or even some of the heavier stranded types. Some of the stranded types with small wire stranding-can be handled in this diameter.

Installation:

The Cable and Wire Cutter may be mounted on any bench or work table. Drill a hole 1-1/4" diameter, through the bench top, 1-1/4" behind the front edge of base casting. Then securely fasten the cutter to the bench with screws or bolts.

Assemble the foot pedal extension rod. This is made up of two parts jointed in the center by a turnbuckle. Screw one end of extension rod into coupling under base casting and fasten the other end to the foot pedal. The turnbuckle permits length adjustment of extension rod necessary for mounting foot pedal to floor or bench rail.

Adjustment:

Set wire stop to length of wire to be cut. Lengths up to 16" may be measured with this stop.

Operation:

The wire or cable should be inserted between the cutter blades from the left hand side. To cut wire, depress foot pedal.

Maintenance:

No maintenance is necessary, except for occasional oiling of moving parts.

When ordering new blades specify.

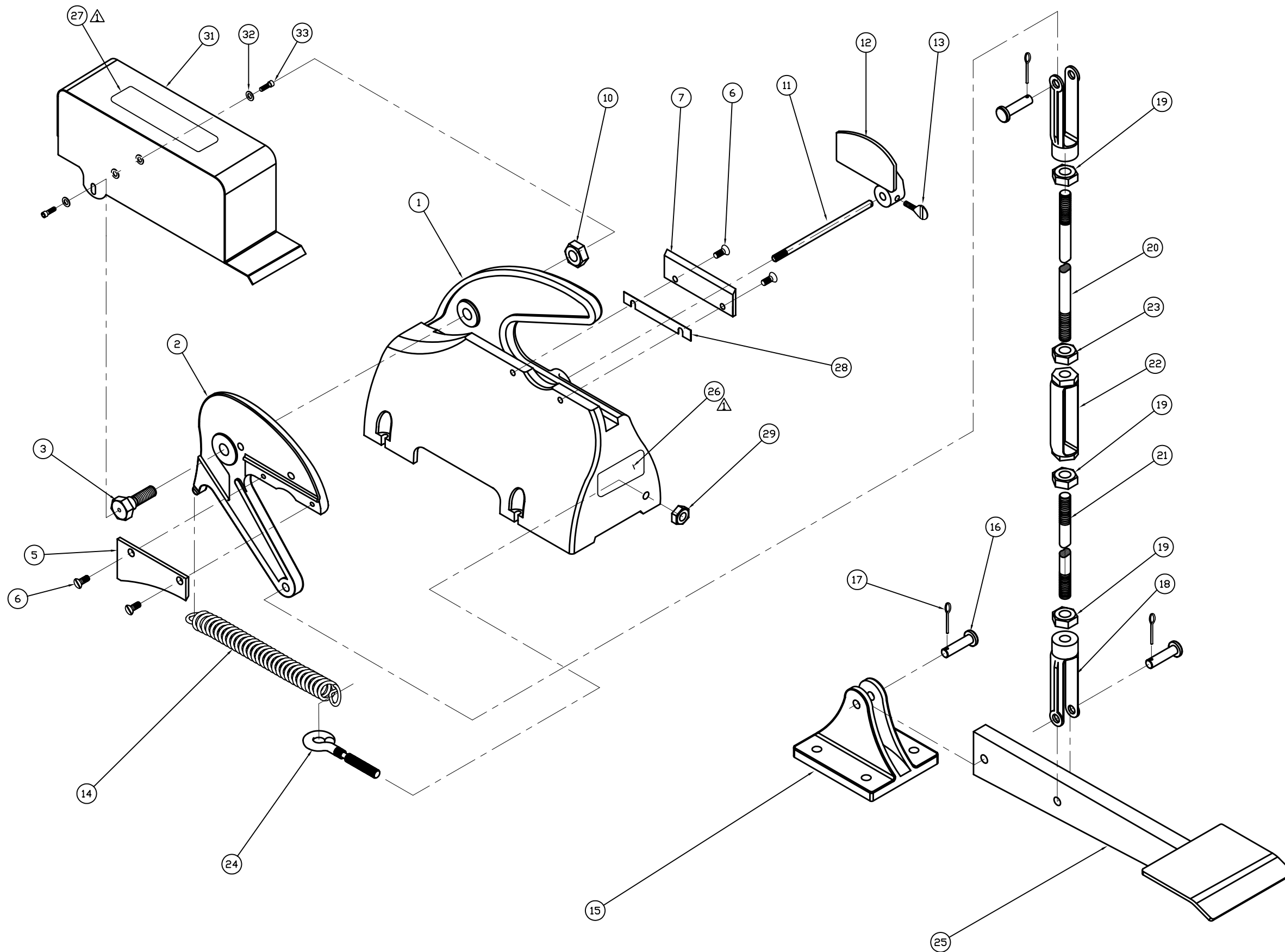
"Set of Blades, L-6040."

Important:

When replacing blades, lower blade should be shimmed so maximum clearance between blades = .001".

WARNING!! The blade guard must rest closed or on top of the cable to be cut by its own weight. If the guard does not close via gravity do not use the cutter until this condition is corrected. Bodily harm can occur.

**Artos Engineering Company
Brookfield, WI 53045 U.S.A.
Phone (262) 252-4545 Fax (262) 252-4544
www.artosnet.com**



QTY.	REF. NO.	PART NO.	DESCRIPTION
1	1	H-4991	BASE WIRE & CABLE CUTTER
1	2	I-1166	JAW
1	3	L-2141	JAW BOLT
	4		
1	5	L-6038	UPPER BLADE
4	6	351.032	FLHD. MACHSCREW 10-32X
1	7	L-6039	LOWER BLADE (CABLE CUTTER)
	8		
	9		
1	10	372.010	HEX JAM NUT 1/2-13
1	11	L-2139	STOP ROD
1	12	L-3629	WIRE STOP
1	13	1341.032	THUMB SCREW
1	14	L-2140	EXTENSION SPRING
1	15	K-862	FOOT LEVER SUPPORT
3	16	282.001	CLEVIS PIN .50X1.09
3	17	283.001	KEY, CUTTER .09 X .075
2	18	1051.002	PTD ADG END JOKE
3	19	372.004	HEX JAM NUT 3/8-16
1	20	L-1253	UPPER ROD
1	21	L-2137	PULL ROD
1	22	1041.002	TURN BUCKLE
1	23	372.008	HEX JAM NUT 3/8-16
1	24	L-8689	EYE BOLT
1	25	I-361	FOOT LEVER
1	26	143669	LABEL, BRADY NAMEPLATE
1	27	143670	LABEL, BRADY WARNING
	28		SHIM (SEE BELOW)
1	29	900-851	NUT, HEX 1/4-20
	30		
1	31	I-2982	GUARD
2	32	L-9998	NYLON WASHER
2	33	113.010	SCREW, SHCS 8-32 X .50
	34		
	35		

SHIM AS REQUIRED

28	LB-382	SHIM, BLADE	<.001> IN.
28	LB-383	SHIM, BLADE	<.003> IN.
28	LB-384	SHIM, BLADE	<.005> IN.
28	LB-385	SHIM, BLADE	<.010> IN.

REVISIONS
 Δ ECO 07-77
 4/16/2007
 LALUMONDIER

H-500i	HEAT TREATMENT/SURFACE TREATMENT	MATERIAL DESCRIPTION	USED FOR	CLASS CODE
	CONFIDENTIAL This document contains CONFIDENTIAL proprietary information which shall not be used, reproduced, or disclosed to others without prior written approval of Artes Engineering Company.	D	45-048	130
	WORK TO MEAN DIMENSIONS DO NOT SCALE DRAWING	ARTOS ENGINEERING COMPANY	WIRE & CABLE CUTTER 45-048	REVISION DATE 4/16/07
		SCALE 1:2	DRAWING NO. H-500i	REVISION 1
	DRAWN BY NORMH	DATE 09/26/2001		SHEET NUMBER 1 of 1