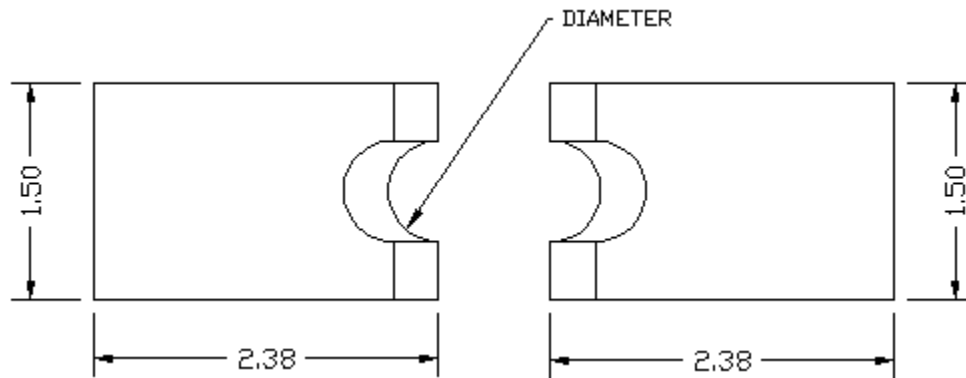


## 45-064 Blades

REV 1 09/10/2015

Dimensions on blade sketches are in inches and are only approximate overall dimensions.

### Standard radius style stripping blades



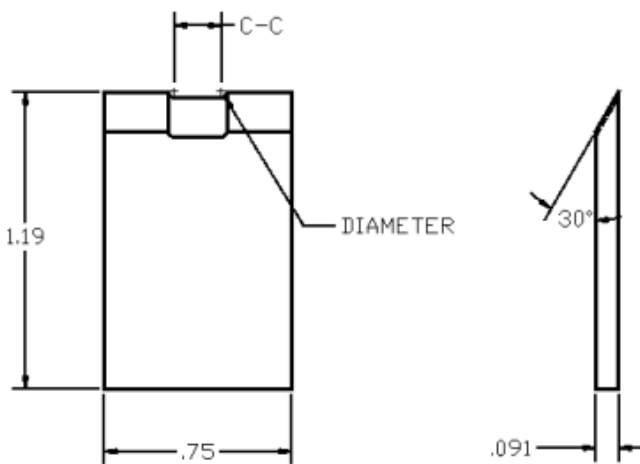
These blades are sold in pairs.

Cable Gage Approximate	Stripping Blade Hole Dia		Part number
	Inch	MM	
Straight	0	0	L-3064
18	0.0390	1.0	L-3616
16	0.0595	1.5	L-3065
14	0.0785	2.0	L-3066
12	0.0995	2.5	L-3067
10	0.1200	3.1	L-3068
8	0.1405	3.6	L-3069
7	0.1610	4.1	L-3070
6	0.1820	4.6	L-3071
5	0.2040	5.2	L-3072
4	0.2280	5.8	L-3073
3	0.2500	6.4	L-3074
2.5	0.2720	6.9	L-3617
2	0.2900	7.4	L-3075
1	0.3125	7.9	L-3076
.5	0.3320	8.4	L-3618
0	0.3480	8.8	L-3077
0.5	0.3680	9.3	L-3619
00	0.3860	9.8	L-3078

00.3	0.4040	10.3	L-3620
00.7	0.4210	10.7	L-3621
000	0.4375	11.1	L-3079
000.5	0.4530	11.5	L-3622
0000	0.4680	11.9	L-3628

## Multi-conductor, oval blades

Generally these blades are custom sized to the wire. If you are unsure how to size the blade, provide a wire samples to Artos Engineering for determination of the blade sizing.



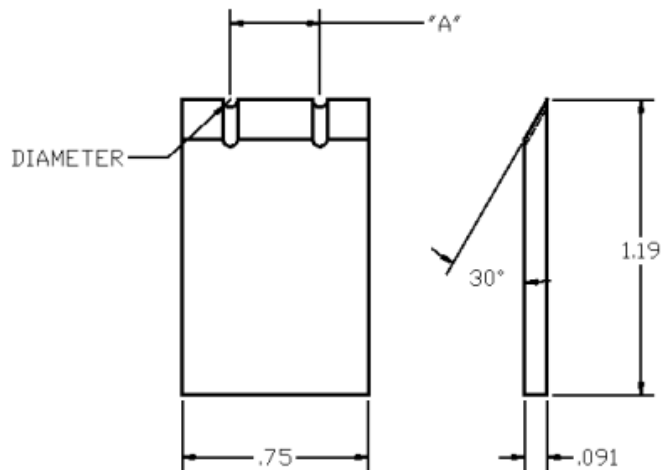
**123531-x** Blade, 30 degree for stripping parallel wire. This blade is the most commonly used for multi-conductor parallel wire.

Item Number	Dia. inches	Dia. mm	"A" inches	"A" mm
-1	0.046	1.17	0.190	4.83
-6	0.080	2.03	0.105	2.67
-13	0.084	2.13	0.101	2.57
-22	0.086	2.18	0.231	5.87
-29	0.086	2.18	0.281	7.14
-21	0.086	2.18	0.314	7.98
-15	0.086	2.18	0.376	9.55
-19	0.089	2.26	0.291	7.39
-9	0.090	2.29	0.207	5.26
-16	0.104	2.64	0.366	9.30
-30	0.116	2.95	0.214	5.44
-17	0.140	3.56	0.360	9.14
-24	0.154	3.91	0.168	4.27
-8	0.160	4.06	0.203	5.16
-3	0.163	4.14	0.355	9.02

-5	0.165	4.19	0.090	2.29
-26	0.166	4.22	0.168	4.27
-28	0.166	4.22	0.270	6.86
-18	0.172	4.37	0.370	9.40
-7	0.186	4.72	0.204	5.18
-20	0.186	4.72	0.314	7.98
-12	0.186	4.72	0.363	9.22
-4	0.188	4.78	0.092	2.34
-11	0.192	4.88	0.094	2.39
-2	0.192	4.88	0.351	8.92
-14	0.192	4.88	0.363	9.22
-10	0.196	4.98	0.353	8.97
-23	0.224	5.69	0.176	4.47
-25	0.236	5.99	0.176	4.47
-27	0.240	6.10	0.285	7.24

## Special Two Conductor

Generally these blades must be custom sized to the wire and the gap between the conductors. The charts given for each blade below are given for reference and are orderable numbers. If you are unsure how to size the blade, provide a wire samples to Artos Engineering for determination of the blade sizing.



**123861-x** Blade, 30 degree for stripping two conductors at the same time.

Item Number	Dia. inches	Dia. mm	"A" inches	"A" mm
-2	0.043	1.09	0.106	2.69
-6	0.055	1.40	0.106	2.69
-1	0.059	1.50	0.361	9.17
-3	0.062	1.57	0.210	5.33
-9	0.065	1.65	0.290	7.37
-4	0.071	1.80	0.211	5.36
-11	0.071	1.80	0.226	5.74

-10	0.071	1.80	0.276	7.01
-8	0.071	1.80	0.300	7.62
-5	0.071	1.80	0.361	9.17
-12	0.084	2.13	0.180	4.57
-13	0.084	2.13	0.280	7.11
-7	0.034	2.13	0.363	9.22