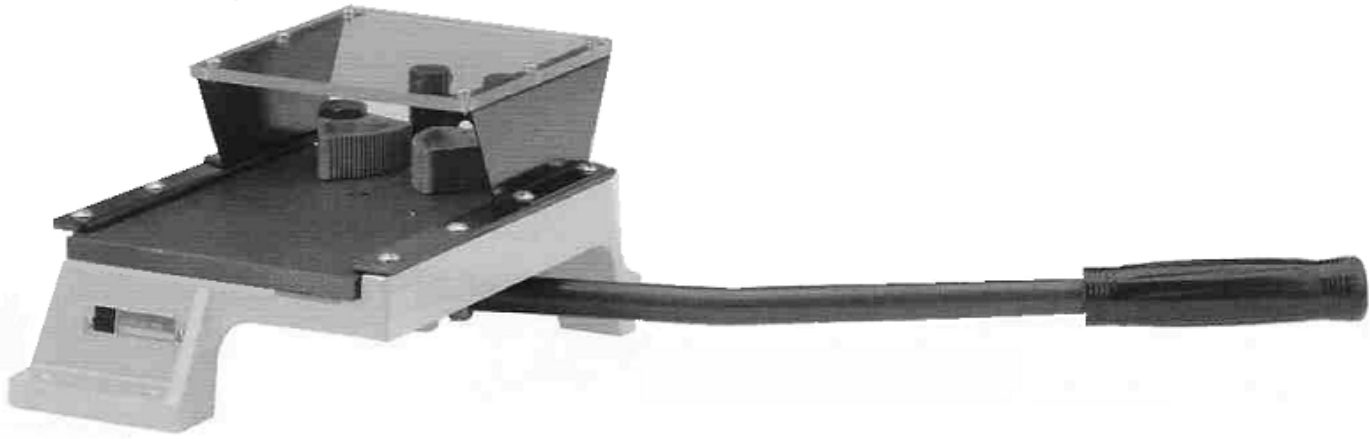




Machine Model	45-064 45-065 Lever stripper	Owners Manual
P/N 6-119881	Rev. 4	Date 24 OCT 2014



Artos Engineering Company
21605 Gateway Court
Brookfield, WI 53045
Phone 262-252-4545 Fax 262-252-4544
www.artosnet.com
service@artosnet.com

Lever Wire Strippers

Operating Instructions & Repair Parts List

The "Lever" Type Wire Stripper will strip rubber, asbestos, plastic, glass, and other similar insulations. Straight blades are standard equipment and are intended for use on parallel cord, ribbon, or flat cable types. Twenty-three different blade hole sizes are available for 45-064 and 18 different blade hole sizes for 45-065.

Installation

Install handle. Then, fasten Stripper to bench with screws.

Adjustments

An Allen Wrench is provided with each unit for adjusting and changing blades. When not in use, it can be kept in the hole in base casting next to blade post

To change or adjust blades, loosen screws in blade posts 1/4 of a turn. The blades can then be easily removed or adjusted closer together or further apart to obtain the best stripping position. Always assemble the blade with bevel toward operator. (To change blades on 45-065, screws must be removed.)

A V-shaped combination wire support and height gauge is located between the blades and jaws. Use the Alien Wrench to adjust it to the desired height. This support may also be used to aid in centering the stripper blades.

To adjust the wire stop for desired length of strip, loosen thumb screw on wire stop. Locate wire stop at desired position, and lock in place with thumb screw.

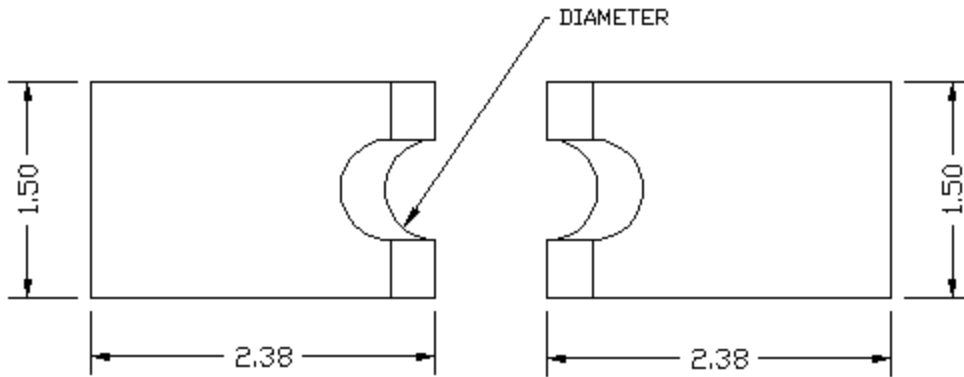
Operation

Push lever handle forward and place wire between jaws and blades, with the wire end against the wire stop. Pull lever - the jaws will automatically grip the wire as the blades sever and remove the insulation slug. To release wire from the jaws, release the handle. The stripper is then ready for the next strip.

Maintenance

Lubricate moving parts regularly, using light machine oil.

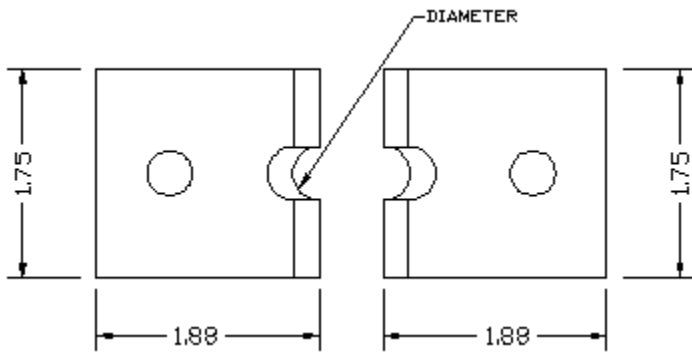
Blades for 45-064 lever stripper



These blades are sold in pairs.

Cable Gage Approximate	Stripping Blade Hole Dia		Part number
	Inch	MM	
Straight	0	0	L-3064
18	0.0390	1.0	L-3616
16	0.0595	1.5	L-3065
14	0.0785	2.0	L-3066
12	0.0995	2.5	L-3067
10	0.1200	3.1	L-3068
8	0.1405	3.6	L-3069
7	0.1610	4.1	L-3070
6	0.1820	4.6	L-3071
5	0.2040	5.2	L-3072
4	0.2280	5.8	L-3073
3	0.2500	6.4	L-3074
2.5	0.2720	6.9	L-3617
2	0.2900	7.4	L-3075
1	0.3125	7.9	L-3076
.5	0.3320	8.4	L-3618
0	0.3480	8.8	L-3077
0.5	0.3680	9.3	L-3619
00	0.3860	9.8	L-3078
00.3	0.4040	10.3	L-3620
00.7	0.4210	10.7	L-3621
000	0.4375	11.1	L-3079
000.5	0.4530	11.5	L-3622
0000	0.4680	11.9	L-3628

Blades for 45-065 lever stripper



These blades are sold in pairs.

Cable Gage Approximate	Stripping Blade Hole Dia		Part number
	Inch	MM	
Straight	0	0	I-6561
	0.0785	2.0	LB-1770
	.0995	2.5	LB-1771
	.120	3.2	LB-1772
	.1405	3.6	LB-1773
	0.161	4.1	LB-1774
	.182	4.6	LB-1775
	.204	5.2	LB-1776
	.228	5.8	LB-1777
	0.250	6.4	LB-1778
	.272	6.9	LB-1779
	.290	7.4	LB-1780
	0.312	7.9	I-6559
	.332	8.4	LB-1781
	0.348	8.8	I-6558
	.368	9.3	LB-1782
	0.386	9.8	I-6557
	0.404	10.3	I-6556
	0.421	10.7	I-6555
	0.435	11.1	I-6537
	.453	11.5	LB-1783
	.468	11.9	I-6538
3/0	.500	12.7	I-6539
	.525	13.3	I-6540
4/0	.560	14.2	I-6541
250,000	.600	15.2	I-6542

	.625	15.9	I-6543
300,000	.650	16.5	I-6544
350,000	.700	17.8	I-6545
400,000	.750	19.1	I-6546
450,000	.800	20.3	I-6547
500,000	.850	21.6	I-6548
550,000	.880	22.4	I-6549
600,000	.925	23.5	I-6550
650,000	.960	24.4	I-6551
700,000	1.000	25.4	I-6552
800,000	1.070	27.2	I-6553
900,000	1.125	28.6	I-6554

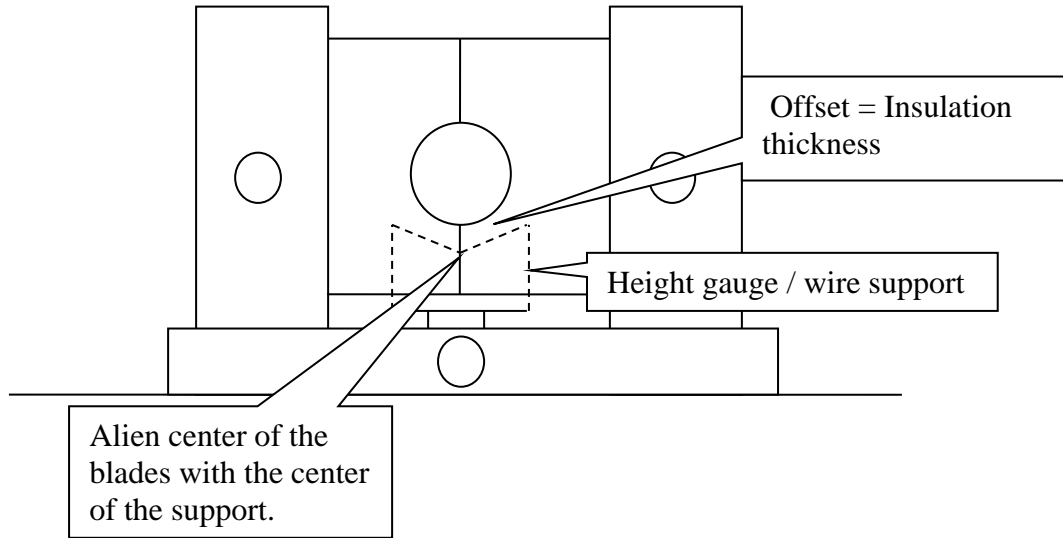
Note

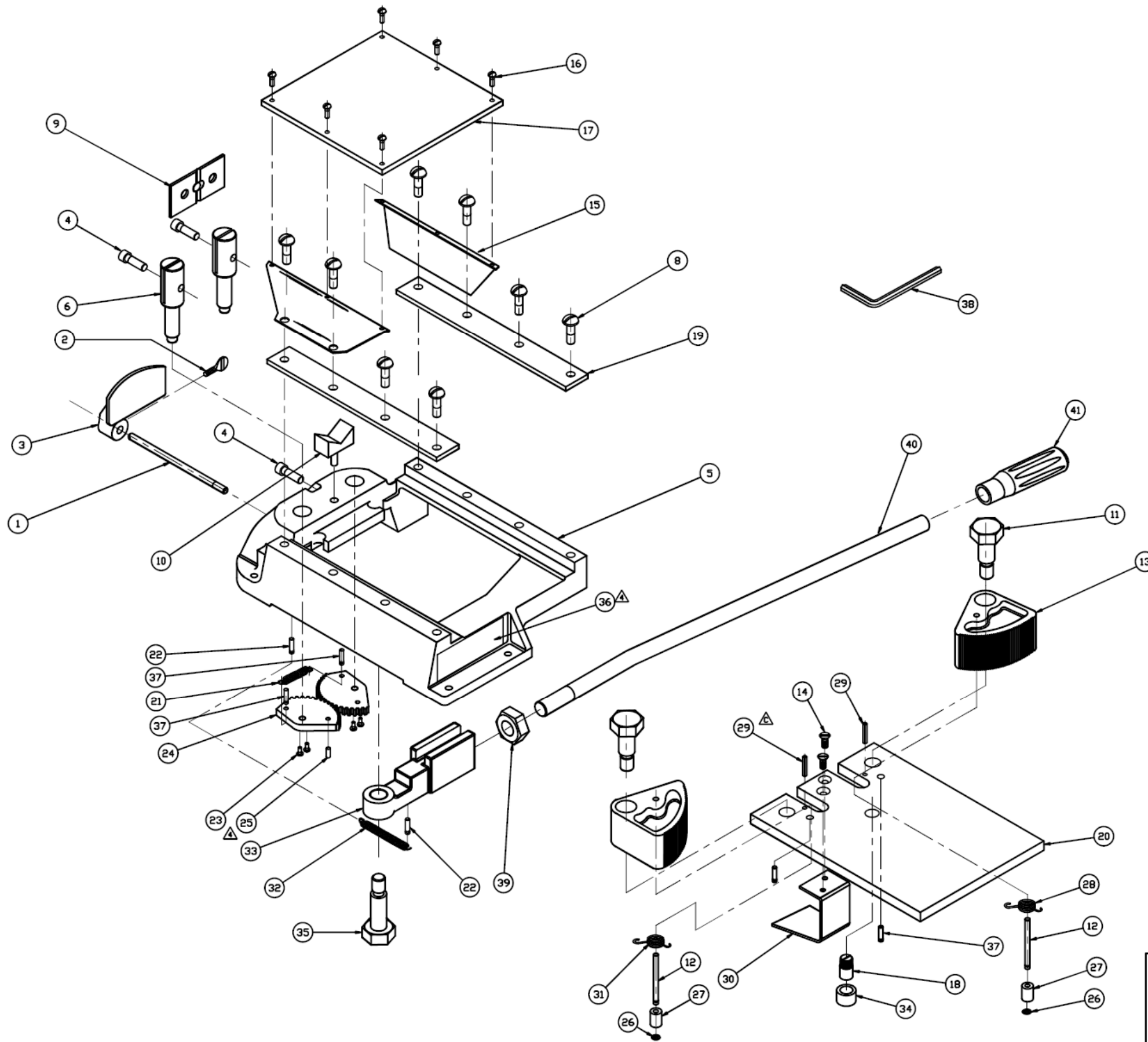
The 45-064 has blade sizes between 0 and .468 These blades are less expensive than the 45-065 blades. Depending on the number of small 45-065 blades being consumed, it may be better to buy a 45-064 stripper.

Blade Sizing Note:

All stranded wire is larger than solid wire of the same gauge and may or may not take the same blade number as the size in stranded wire. The next size blades may be required depending on number and size of strands. If doubtful about proper blade size, send wire samples (at least 12" long) to ARTOS ENGINEERING, CO. for proper blade recommendations

Blade / Guide Set-up 45-064 / 45-065





QTY.	REF. NO.	PART NO.	DESCRIPTION
1		L-9493	WIRE STOP ROD
1		1341.013	THUMB SCREW
1		L-3629	WIRE STOP
3		113.051	BLADE & WIRE SUPPORT SCR.
1		H-1466I	BASE
2		K-5256	BLADE POST
		7	
8		356.006	GUIDE PLATE SCREW
-		9	SEE BLADE CHART
1		L-9466	WIRE SUPPORT
2		113.052	JAW SHOULDER SCREW
2		281.092	PIN
2		K-5257	JAW
2		14 351.041	BUMPER SCREW
2		K-5261	SHIELD SUPPORT BRACKET
6		501.032	SHIELD SCREW
1		I-2979	SHIELD
1		L-2988	SLIDING PLATE PIN
2		K-1332	TOP GUIDE PLATE
1		K-5254	SLIDING PLATE
1		L-9469	BLADE POST SPRING
2		281.044	GROOVED PIN
4		501.019	GEAR RETAINING SCREW
2		K-5260	GEAR
1		281.080	GROOVED PIN IN GEAR
2		482.042	SNAP RING
2		L-3154	SLEEVE
1		K-5258	RIGHT JAW SPRING
2		900-659	PIN SPRING @.125X.75
1		K-5255	BUMPER
1		K-5259	LEFT JAW SPRING
1		I-6562	RETURN SPRING
1		I-6562	HANDLE ARM
1		L-3213	ROLLER
1		L-9468	HANDLE SHOULDER SCREW
1		140678	NAMEPLATE
4		L8-317	GROOVED PIN
1		902-949	SET SCREW WRENCH
1		372.042	HANDLE NUT
1		K-5262	HANDLE BAR
1		292.002	HANDLE GRP

SEE NOTE 2

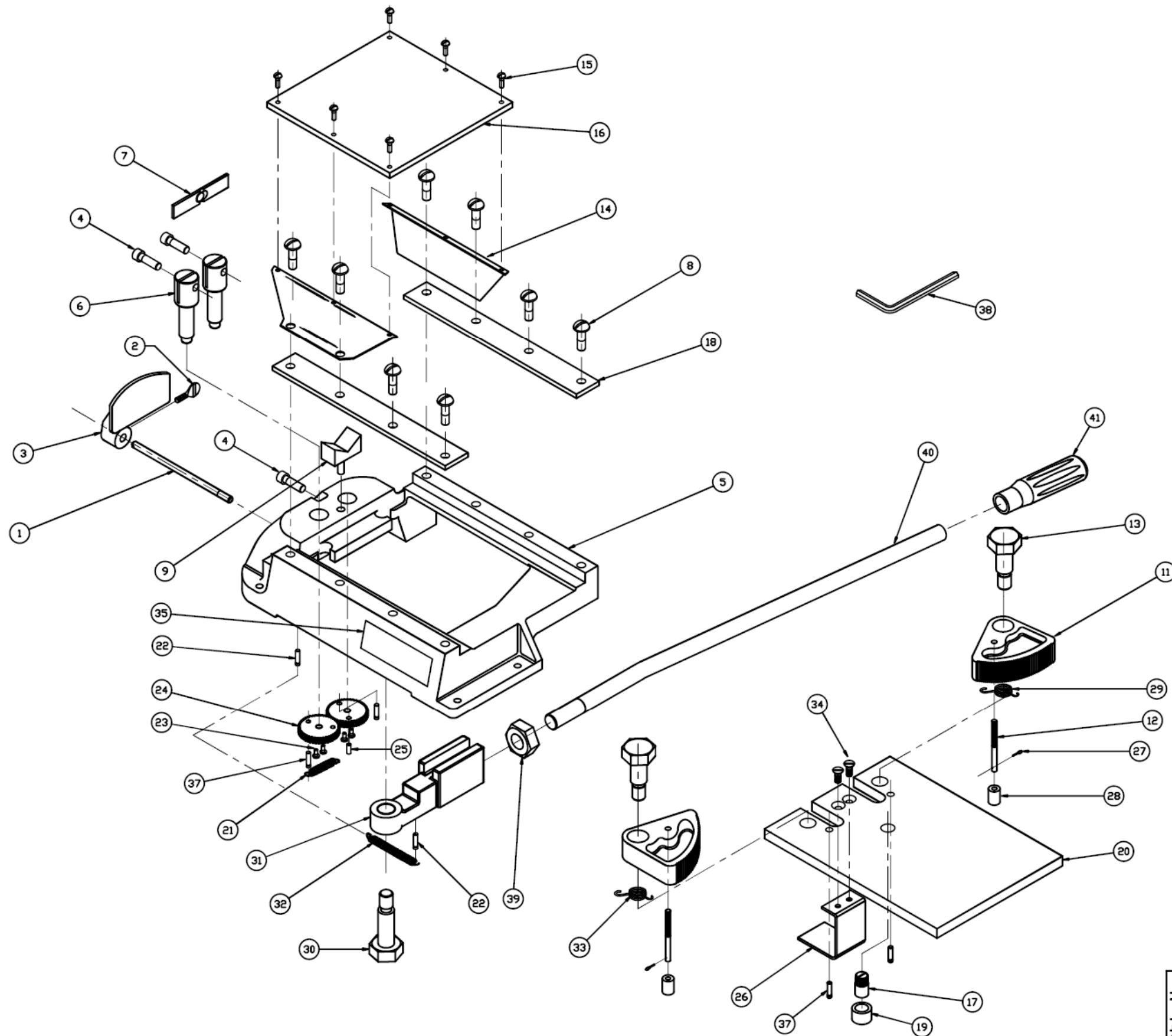
SEE NOTE 2

NOTE:
 1. TO ASSEMBLE BLADE HOLDER ASSEMBLY (ITEMS 6,23,24,25,37) USE INSTRUCTIONS 6-145258
 2. FOR SPARE PARTS - DO NOT ORDER BLADE HOLDER PARTS ITEMS 6 OR 24, ORDER 5-145259 INSTEAD

NOTE:
 REF. PARTS USED FOR PACKAGING:
 I-3349 CARTON
 I-3609 LINER
 K-7133 PACKAGING
 K-7994 PACKAGING

REVISIONS
A ECD 02-77 05/26/02 KDRMH
A ECD 05-229 11/21/2006 LALLMONDIER
A ECD 08-117 7/30/2008 LALLMONDIER

H-14671	HEAT TREATMENT/SURFACE TREATMENT	MATERIAL DESCRIPTION	USED FOR	45-065	CLASS CODE
	CONFIDENTIAL The document contains CONFIDENTIAL proprietary information which shall not be made, reproduced, or disclosed to others without prior written consent of Artos Engineering Company.	D	ARTOS ENGINEERING COMPANY		130
	WORK TO MEAN DIMENSIONS DO NOT SCALE DRAWING	LEVER STRIPPER HEAVY DUTY		REVISION DATE	4/30/08
	DRAWN BY NORMH	SCALE 1:2	DATE 09/24/2001	REVISED BY H-14671	SHEET NUMBER 4
	DESIGNED BY H. KEENE				1 of 1



QTY.	REF. NO.	PART NO.	DESCRIPTION
1		L-9493	WIRE STOP ROD
1	2	I341.013	THUMB SCREW
1	3	L-3629	WIRE STOP
3	4	I13.051	BLADE & WIRE SUPPORT SCR
1	5	H-14651	BASE
2	6	L-9494	BLADE POST
-	7		SEE BLADE CHART
8	8	356.006	GUIDE PLATE SCREW
1	9	L-3634	WIRE SUPPORT
10			
2	11	L-3203	JAW
2	12	L-3211	PIN
2	13	L-3214	JAW SHOULDER SCREW
2	14	I-2980	SHIELD SUPPORT BRACKET
6	15	501.032	SHIELD SCREW
1	16	I-2979	SHIELD
1	17	I-2988	SLIDING PLATE PIN
2	18	K-1332	TOP GUIDE PLATE
1	19	L-3213	ROLLER
1	20	K-1491	SLIDING PLATE
1	21	L-2126	BLADE POST SPRING
2	22	281.044	GROOVED PIN
4	23	501.019	GEAR RETAINING SCREW
2	24	L-4021	GEAR
1	25	281.080	GROOVED PIN IN GEAR
1	26	L-8897	BUMPER
2	27	283.003	COTTER PIN
2	28	L-3154	SLEEVE
1	29	L-3592	RIGHT JAW SPRING
1	30	L-9468	HANDLE SHOULDER SCREW
1	31	I-6562	HANDLE ARM
1	32	L-3630	RETURN SPRING
1	33	L-3593	LEFT JAW SPRING
2	34	351.041	BUMPER SCREW
1	35	I40678	NAMEPLATE
36			
4	37	L-8-317	GROOVED PIN
1	38	902-949	SET SCREW WRENCH
1	39	372.042	HANDLE NUT
1	40	K-5262	HANDLE BAR
1	41	292.002	HANDLE GRP

SEE NOTE 2

SEE NOTE 2

NOTE:
 1. TO ASSEMBLE BLADE HOLDER ASSEMBLY (ITEMS 6,23,24,25,37) USE INSTRUCTIONS 6-145260
 2. FOR SPARE PARTS - DO NOT ORDER BLADE HOLDER PARTS ITEMS 6 OR 24, ORDER 5-145261 INSTEAD

NOTE 1:
 REF. PART USED FOR AIR OPTION:
 I-1287 LEVER WIRE STRIP

NOTE 2:
 REF. PARTS USED FOR PACKAGING:
 I-3349 CARTON
 I-3609 LINER
 K-7133 PACKAGING
 K-7994 PACKAGING

H-14681	HEAT TREATMENT/SURFACE TREATMENT	MATERIAL DESCRIPTION	USED FOR	45-064	 CLASS CODE 130 REVISION DATE 12/20/01 REVISION A SHEET NUMBER 1 of 1
	CONFIDENTIAL <small>This document contains CONFIDENTIAL proprietary information and shall not be used, reproduced, or disclosed in any manner without the express approval of Artos Engineering Company.</small>	D			
	LEVER STRIPPER				
	WORK TO MEAN DIMENSIONS DO NOT SCALE DRAWING	DRAWN BY NORMH CHECKED BY H. KEENE	SCALE 1:2 DATE 08/30/2001	DRAWING NO. H-14681	