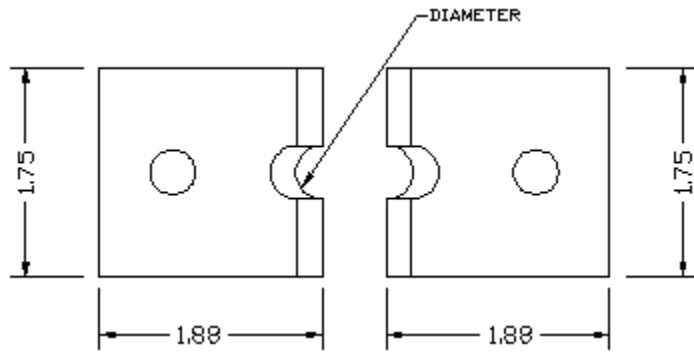


## 45-065 Blades

REV 0 05/13/2013

Dimensions on blade sketches are in inches and are only approximate overall dimensions.



These blades are sold in pairs.

Cable Gage Approximate	Stripping Blade Hole Dia		Part number
	Inch	MM	
Straight	0	0	I-6561
	0.0785	2.0	LB-1770
	.0995	2.5	LB-1771
	.120	3.2	LB-1772
	.1405	3.6	LB-1773
	0.161	4.1	LB-1774
	.182	4.6	LB-1775
	.204	5.2	LB-1776
	.228	5.8	LB-1777
	0.250	6.4	LB-1778
	.272	6.9	LB-1779
	.290	7.4	LB-1780
	0.312	7.9	I-6559
	.332	8.4	LB-1781
	0.348	8.8	I-6558
	.368	9.3	LB-1782
	0.386	9.8	I-6557
	0.404	10.3	I-6556
	0.421	10.7	I-6555
	0.435	11.1	I-6537
	.453	11.5	LB-1783

	.468	11.9	I-6538
3/0	.500	12.7	I-6539
	.525	13.3	I-6540
4/0	.560	14.2	I-6541
250,000	.600	15.2	I-6542
	.625	15.9	I-6543
300,000	.650	16.5	I-6544
350,000	.700	17.8	I-6545
400,000	.750	19.1	I-6546
450,000	.800	20.3	I-6547
500,000	.850	21.6	I-6548
550,000	.880	22.4	I-6549
600,000	.925	23.5	I-6550
650,000	.960	24.4	I-6551
700,000	1.000	25.4	I-6552
800,000	1.070	27.2	I-6553
900,000	1.125	28.6	I-6554

Note The 45-064 has blade sizes between 0 and .468 These blades are less expensive than the 45-065 blades. Depending on the number of small 45-065 blades being consumed, it may be better to buy a 45-064 stripper