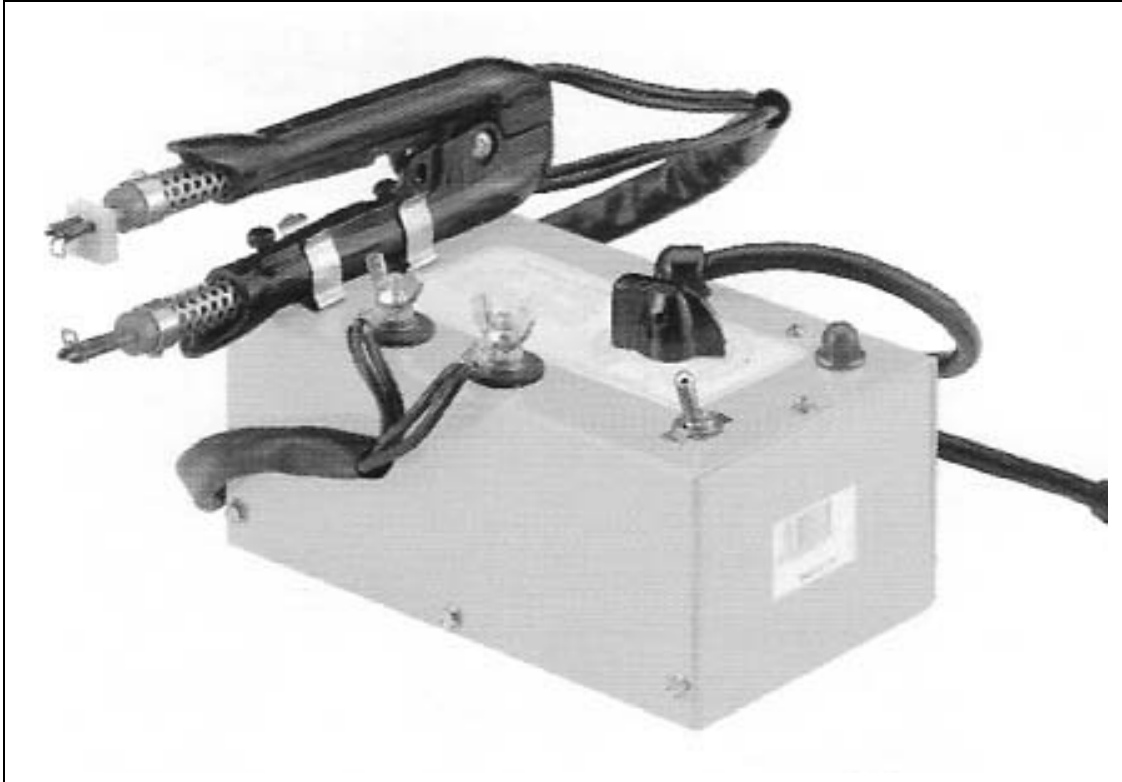


**ARTOS**  
ENGINEERING COMPANY

Machine Model	45-130 Thermal Stripper	Owners Manual		
PN	6-119883	Rev. 0	Date	12 Sept. 2006

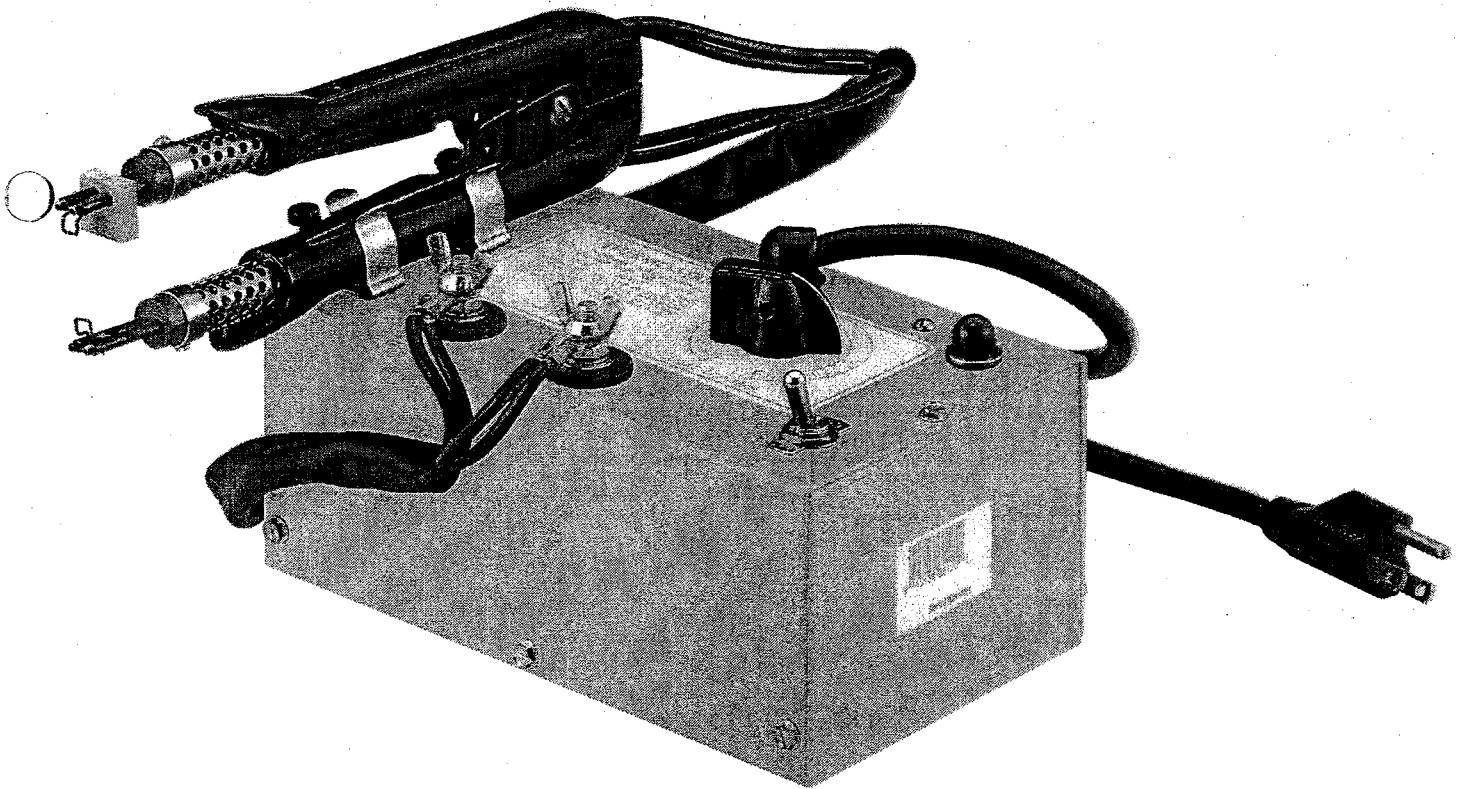


Artos Engineering Company  
21605 Gateway Ct  
Brookfield, WI 53045  
Phone 1 262 252 4545 Fax 1 262 252 4544  
[www.artosnet.com](http://www.artosnet.com)  
[service@artosnet.com](mailto:service@artosnet.com)

# 45-130/133 Thermo Strip

Owners Manual #6-119883

Rev. 0 March 2002



WORLD LEADER IN WIRE PROCESSING SYSTEMS



**ARTOS**  
ENGINEERING COMPANY

## ***Thermo Strip Hot Element Wire Stripper***

### **Operating Instructions**

#### **ENVIRONMENT:**

The Thermo Strip must be used in a dry work environment free from standing or splashing liquids. The work area must be large enough to allow the operator enough working area to avoid accidental contact with the elements while it is resting in the holder. The area must be properly ventilated to eliminate any toxic fumes that may come from the melting insulation. **Customer must determine toxic risk of material being processed.**

#### **SAFETY:**

The Thermo Strip uses **EXTREMELY HOT** wire elements to burn a ring around the wire to be stripped.

Contact with the skin will cause serious burns. **DO NOT TOUCH THE ELEMENTS TO CHECK TEMPERATURE!!**

Contact with clothing or other flammable materials may cause fire.

Keep all flammable liquids away.

#### **MAINTENANCE:**

**WARNING: Perform all maintenance with the Thermo Strip unplugged!**

Check the setscrews that hold the element **DAILY**. The heating and cooling cycle may cause them to loosen causing poor or no contact.

#### **OPERATIONS:**

While the unit is off and cold set the strip stop, item # 3 the desired distance from the element for the required strip. Secure with setscrew # 19. Remember to include the element in the setting. Adjust screw # 8 to adjust strip diameter. (Not applicable on 45-141)

Turn the toggle switch on. Set the temperature just high enough to accomplish the strip desired. Determine this by trial.

#### **Stripping:**

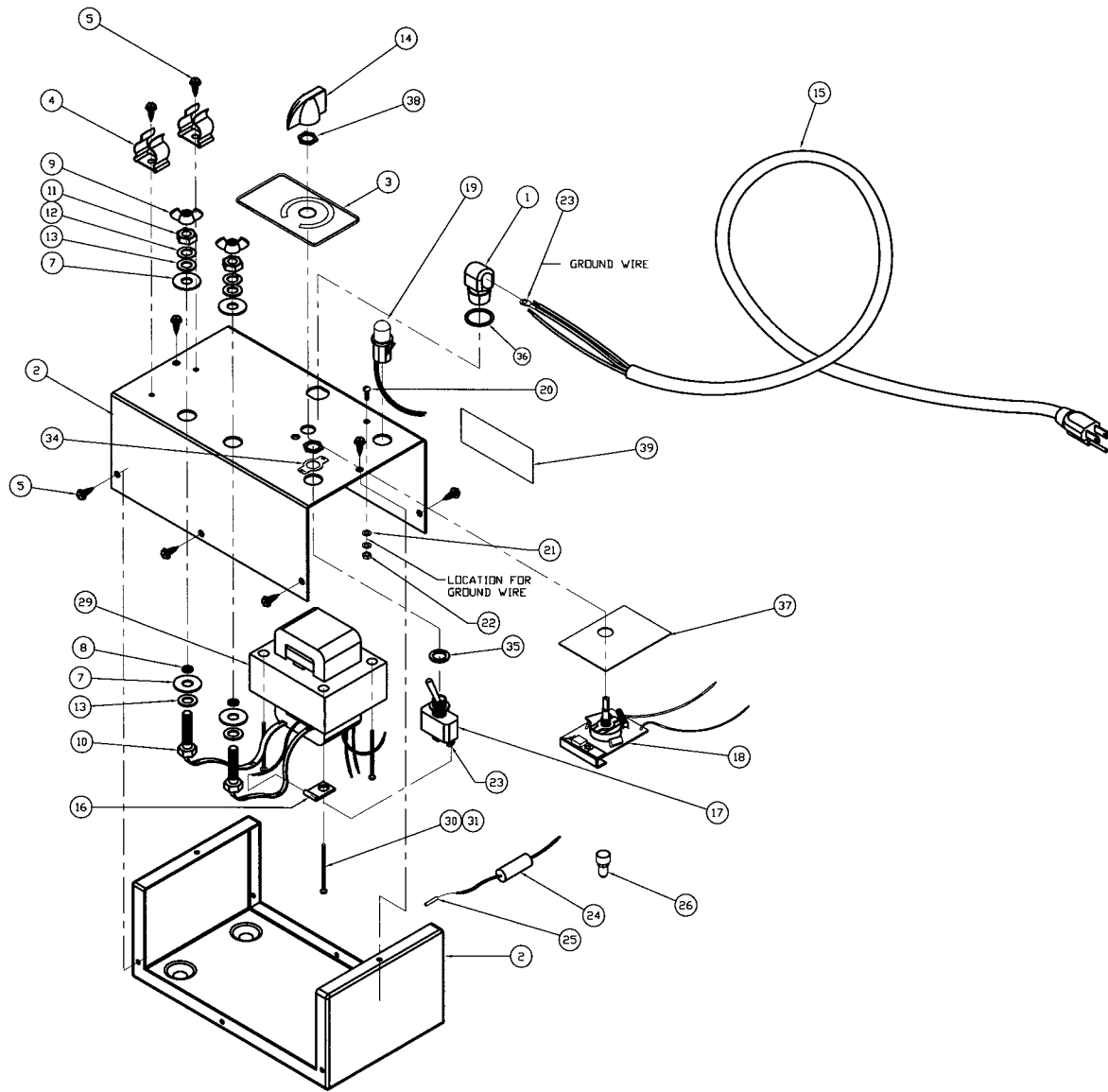
If holding the wire to be stripped by hand, hold it far enough away from the end to avoid injury. Heat resistant gloves are recommended.

#### **45-140 Pincer Type**

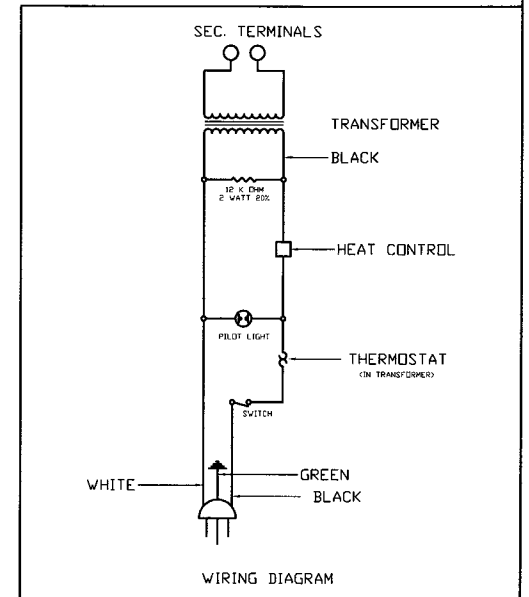
Close the elements on the wire and rotate the wire or the stripper at least 90 degrees and pull.

#### **45-141 Single Loop type**

Hook the loop over the wire at the desired point. Rotate the wire or the stripper slightly over 90 degrees to burn a full ring and pull.

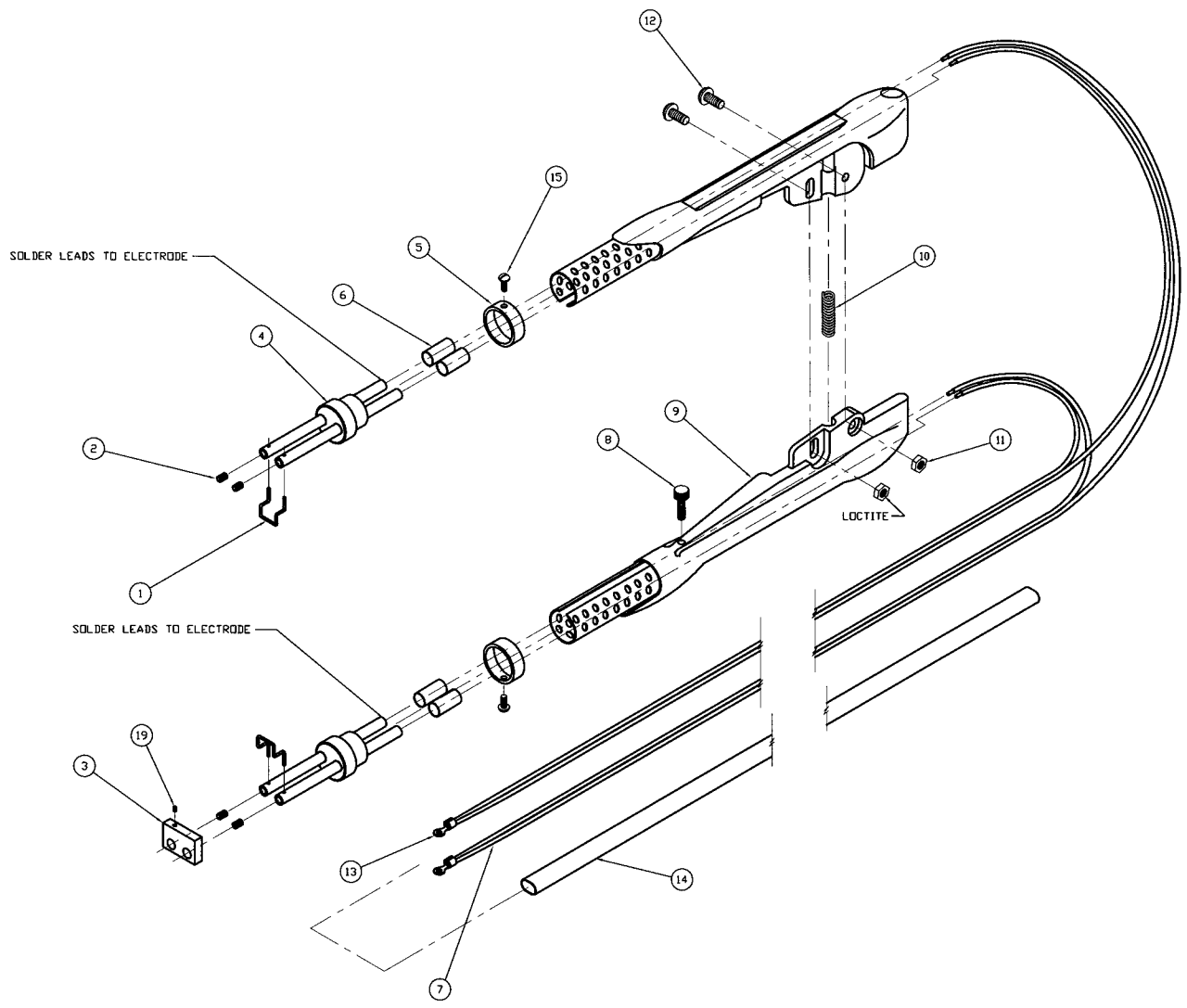


QTY.	REF.	PART NO.	DESCRIPTION
1		272.009	STRAIN RELIEF
1	2	I-1125	CASE
1	3	140900	THERMO LABEL
2	4	141.013	TOOL HOLDER
10	5	506.001	SCREW
6			
4	7	L-3744	PLAIN WASHER
2	8	L-3748	WASHER
2	9	375.009	WING NUT
2	10	L-3749	TERMINAL BOLT
2	11	372.007	TERMINAL NUT
2	12	633.022	TERMINAL LOCK WASHER
4	13	903-283	STEEL WASHER
1	14	342.002	KNUR
1	15	B51.078	CORD SET
1	16	133.011	CLAMP
1	17	591.008	SWITCH
1	18	K-4841	HEAT CONTROL
1	19	311.012	PILOT LIGHT
1	20	353.107	SCREW
2	21	633.006	LOCK WASHER
1	22	371.041	NUT
3	23	910-426	TERMINAL
1	24	751.134	RESISTOR
2	25	543.007	SLEEVING
3	26	912-800	CONNECTOR
	27		
	28		
1	29	J-240	TRANSFORMER
4	30	378.004	SPEED NUT
4	31	353.121	SCREW
	32		
	33		
1	34	590.001	ON-OFF PLATE
1	35	633.046	LOCK WASHER
1	36	632.127	WASHER
1	37	L-8-598	INSULATOR
1	38	371.047	NUT 3/8-32
1	39	140678	NAMEPLATE



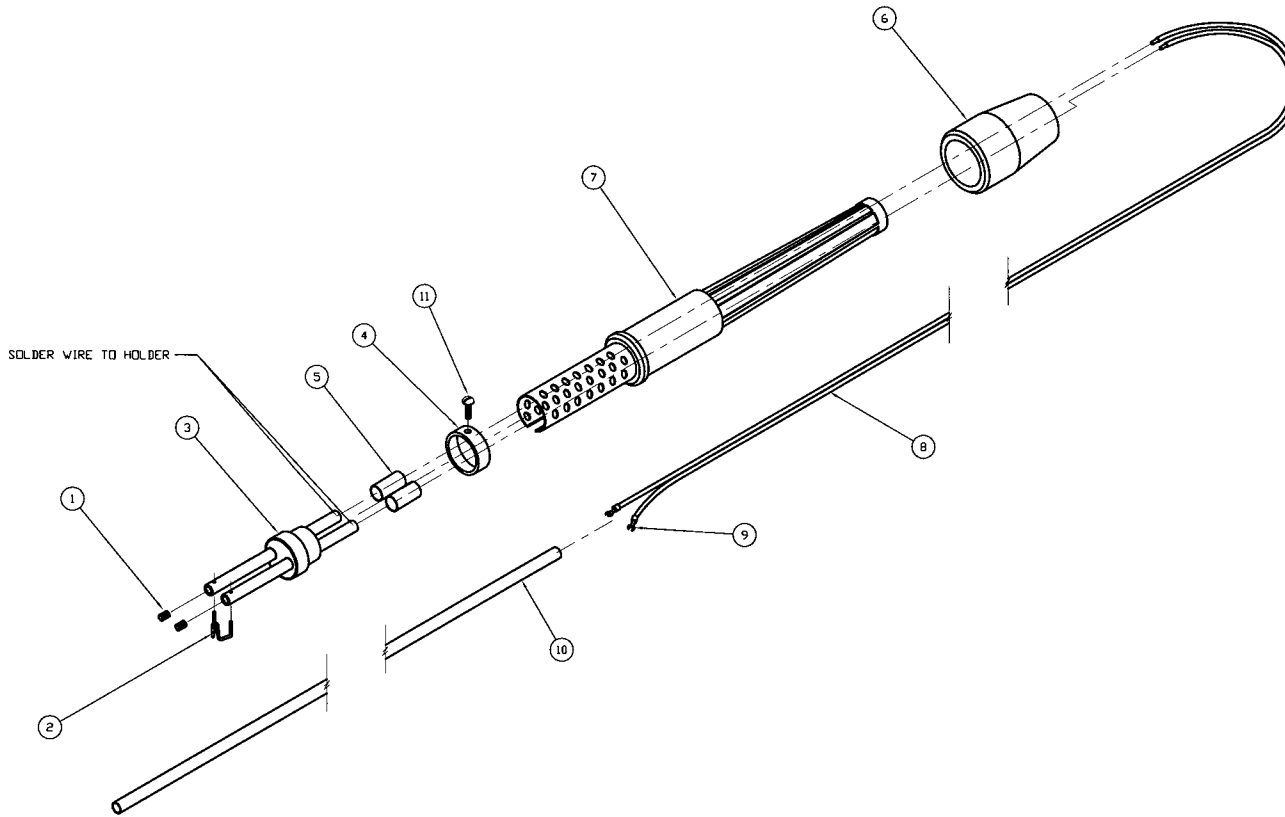
HEAT TREATMENT/SURFACE TREATMENT	MATERIAL DESCRIPTION	USED FOR	QTY.
H-7521	CONFIDENTIAL Do not release information without approval of the originator. If release is required, it must be done in accordance with the instructions on the form.	45-130/133	130
	D	ARTOS PRECISION ENGINE COMPANY	01/08/02
		H-752i POWER UNIT ASSEMBLY	A
	WORK TO MEAN DIMENSIONS DO NOT SCALE DRAWING	REVISED BY N. HILL H. KEENE	DATE 10/10/2001

QTY	REF	PART NO.	DESCRIPTION
2	1	L-5597C	ELECTRODE
4	2	1333.087	SET SCREW
1	3	L-5588	WIRE STOP
2	4	L-5575	ELECTRODE HLD. ASS'Y
2	5	L-6043	RING
6*	6	L-6693	HEAT SHRINK TUBE
20*	7	654.058	WIRE
1	8	1341.037	STOP SCREW
2	9	K-2470	HANDLE SUB-ASS'Y
1	10	L-5592	SPRING
2	11	900-739	NUT
2	12	356.006	SCREW
2	13	1A-542	TERMINAL
4*	14	603-620	SLEEVING
2	15	501.052	SCREW
	16		
	17		
	18		
1	19	1332.057	SET SCREW
	20		



HEAT TREATMENT/SURFACE TREATMENT		INTERNAL DESCRIPTION		USED FOR		45-130/140			
CONFIDENTIAL		D		ARTOS ENGINEERING COMPANY		130		DATE CODE	
WORK TO MEAN DIMENSIONS TO 10% TOLERANCE		ES-1 STANDARDS APPLY		1:1		45-130		01/08/02	
PLEASE READ THEM BEFORE MFG.		N. HILL H. KEENE		11/01/2001		I-1118		A	
								1 of 1	

QTY.	NO.	PART NO.	DESCRIPTION
2	1	1333.087	SET SCREW
1	2	L-5599C	ELECTRODE
1	3	L-5575	ELECT. HOLDER ASS'Y
1	4	L-6043	RING
2	5	I-6693	HEAT SHRINK TUBE
1	6	IL-4944	CRK SLEEVE
1	7	K-2471	HANDLE SUB-ASS'Y
10'	8	654.05B	WIRE
2	9	I-5322	TERMINAL
4'	10	S43.033	SLEEVING
1	11	S91.052	SCREW
	12		
	13		
	14		



HEAT TREATMENT/SURFACE TREATMENT	MATERIAL DESCRIPTION	USED FOR	45-141	
CONFIDENTIAL This drawing contains DESIGN INFORMATION AND IS NOT TO BE REPRODUCED OR DISSEMINATED WITHOUT THE WRITTEN APPROVAL OF THE ENGINEERING DEPARTMENT	D		130	
WORK TO MEAN DIMENSIONS DO NOT SCALE DRAWING		THERMO-STRIP SINGLE LOOP	01/08/02	
ES-1 STANDARDS APPLY PLEASE READ THEM BEFORE MFG.	DESIGNED BY M. HILL CHECKED BY H. KEENE	SCALE 1:1	1-1119	REVISION A 1 of 1