

Power Stripmaster blade sets

REV 1 6/18/2012

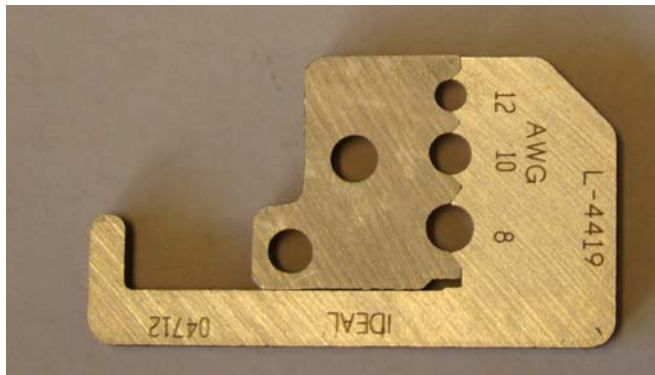
Knife type blades – For general purpose stripping.

Hole diameter for each gauge size, in inches, tolerance $+0.001/-0.005$

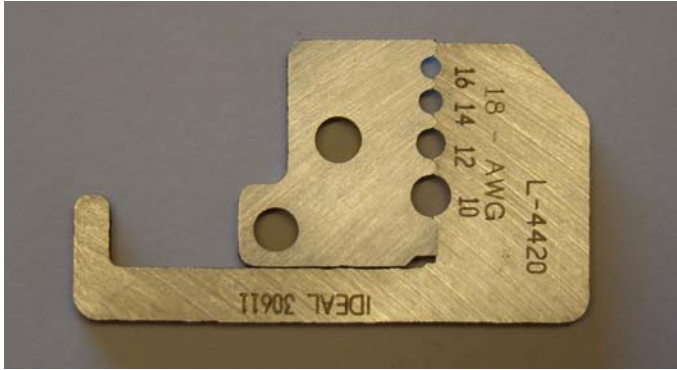
Blade	8	10	12	14	16	18	20	22	24	26	28	30
L-4419	0.159	0.141	0.106									
L-4420		0.144	0.150	0.085	0.073							
L-4421		0.144	.0113	0.090	0.072	0.061	0.048					
L-4422				0.090	0.072	0.061	0.048	0.039				
L-4452												
L-4994					0.072	0.061	0.048	0.039	0.032	0.026		
L-5361								0.039	0.032	0.026	0.021	0.016

Hole diameter for each square mm size, in mm, tolerance $+0.25\text{mm}/-0.127\text{mm}$

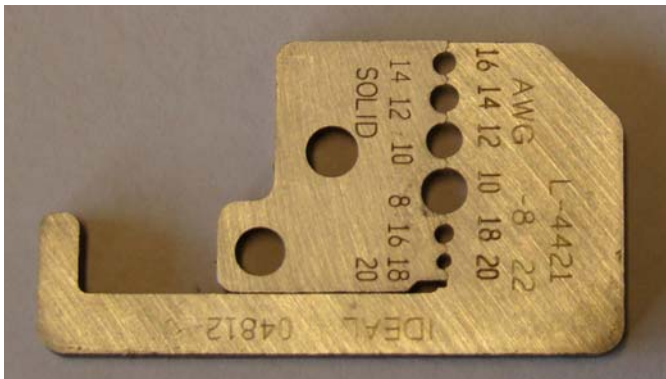
Blade	10.00	6.00	4.00	2.50	1.50	1.00	0.50	0.22	0.20	0.13	0.08	0.05
L-4419	4.04	3.58	2.69									
L-4420		3.66	2.67	2.16	1.85							
L-4421		3.66	2.87	2.29	1.83	1.55	1.22					
L-4422				2.29	1.83	1.55	1.22	0.99				
L-4452												
L-4994					1.83	1.55	1.22	0.99	0.81	0.66		
L-5361								0.99	0.81	0.66	0.53	0.41



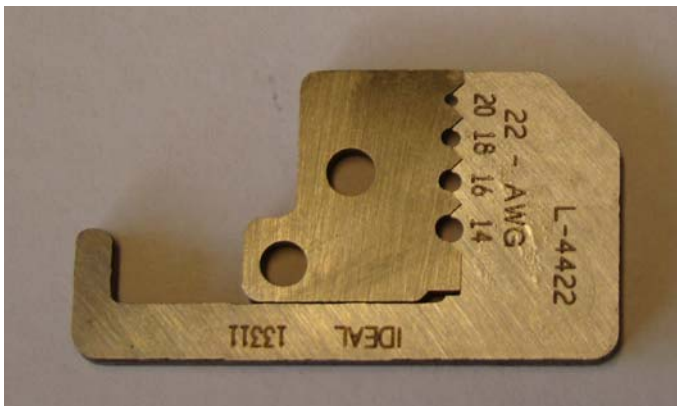
L-4419 Consists of K-1845 Stationary blade K-1846 Moving blade



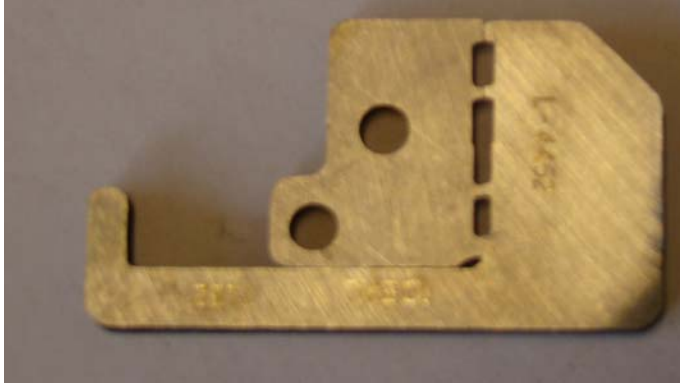
L-4420 Consists of K-1847 Stationary blade K-1848 Moving blade



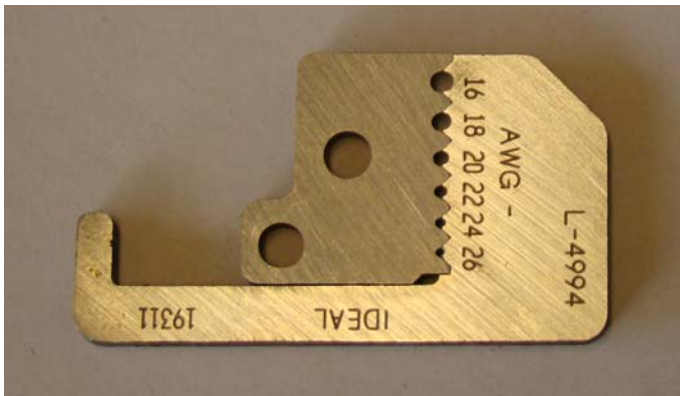
L-4421 Consists of K-2400 Stationary blade K-2401 Moving blade



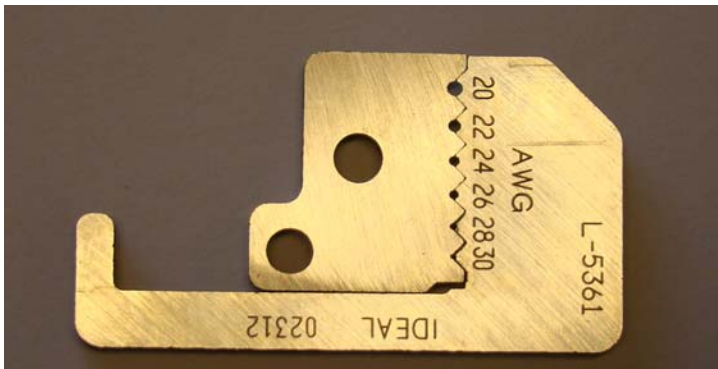
L-4422 Consists of K-1851 Stationary blade K-1852 Moving blade



L-4452 Consists of K-2419 Stationary blade K-2418 Moving blade. This is for 2 conductor SP and SPT cable.



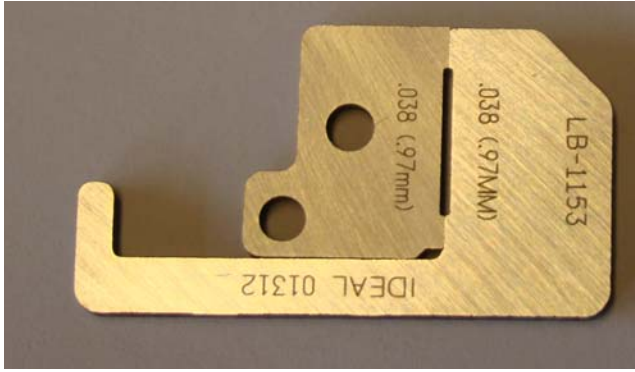
L-4994 Consists of K-2139 Stationary blade K-2140 Moving blade



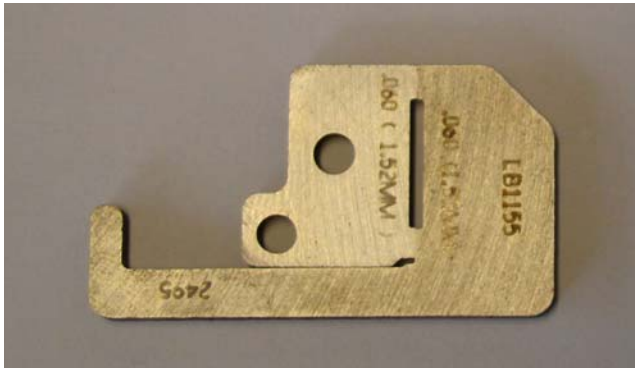
L-5361 Consists of K-2306 Stationary blade K-2307 Moving blade

(picture not available)

LB-1152



LB-1153 The opening is 0.38 wide by .516 long



LB-1155 The opening is .060 wide by .510 long

Die type blades – For thin insulations or difficult to strip wires.

All dimensions are in inches. The ordering number (L-____) is shown in the blade image.

