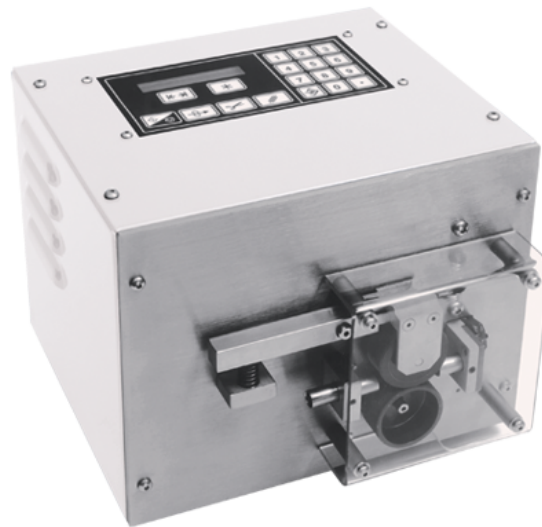


Wire Prepper Lite



TECHNICAL SPECIFICATIONS

CUT LENGTHS

Minimum: .06 in. (1.6 mm)
Maximum: 9,999.99 in (25M)

CUT QUANTITY

Minimum 1
Maximum 9,999

CUT CAPACITY

Wire: #30 AWG (.05 mm²)
to #10 AWG (6 mm²)
Stranded Cable: Up to 5/16 in (7.9 mm²)
O.D. Multi Conductor

DRIVE SPEED

50 FPM (15.4 MPM)

FEED WHEELS

Tungsten Carbide Grit Coated

PROGRAMMING

User-friendly LCD display with
membrane panel data entry

CUTTING MECHANISM

Geared Motor Drive

ACCURACY Approximately
2% of wire length (wire
dependent)

VOLTAGE

120V or 220V reversible fuse
50 Hz or 60 Hz

DIMENSIONS

Length: 9.5 in. (241 mm)
Width: 9.5 in. (241 mm)
Height: 8.0 in (203 mm)
Weight: 14.5 lbs (7.9 Kg)

MAIN FEATURES

Automatically measures, cuts, and counts
30-#10 AWG wire and up to 5/16 in. O.D
multi conductor cable, tubing and heat shrink.

Light weight and portable- weighting less than
20 lbs. It is an ideal benchtop productivity
tool.

Complete set-up change in less than one
minute- including changing wire reel.

Full electronic user-friendly controls with a
negligible learning curve to master.

Equipped with heat treated steel blades for long
life and repeatable clean cuts.

Utilizes powerful motor drive to actuate
cutting blades for consistent, square cuts.

All electric design eliminates pneumatic
requirements.

Data entry can be in either English or Metric
measuring systems.

Requires no tools for set-up or operation.

Low investment cost and high productivity
makes for a quick ROI- perfect for shops.

ORDERING INFORMATION

Wire Prepper Lite (110V)	45-725	Premium Dereeler (6-16 in. dia. reels)	45-712
Wire Prepper Lite (220V)	45-730	Dereeler (6 in dia. reels)	45-711
Moving Blade	LB-1609	Urethane Wheel	LB-2200
Stationary Blade	K-7265	Kevlar Fiber Optic Cutting Kit	45-725-001
Top Idler Wheel	K-6301		
Bottom Wheel	K7259		