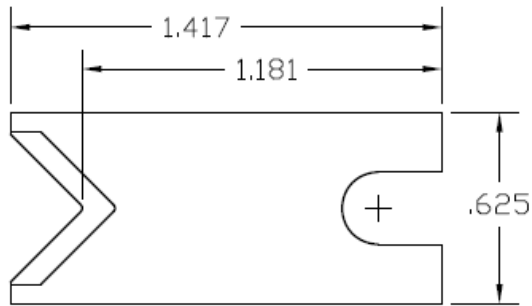


CR Series Blades

REV 3 8/10/2015

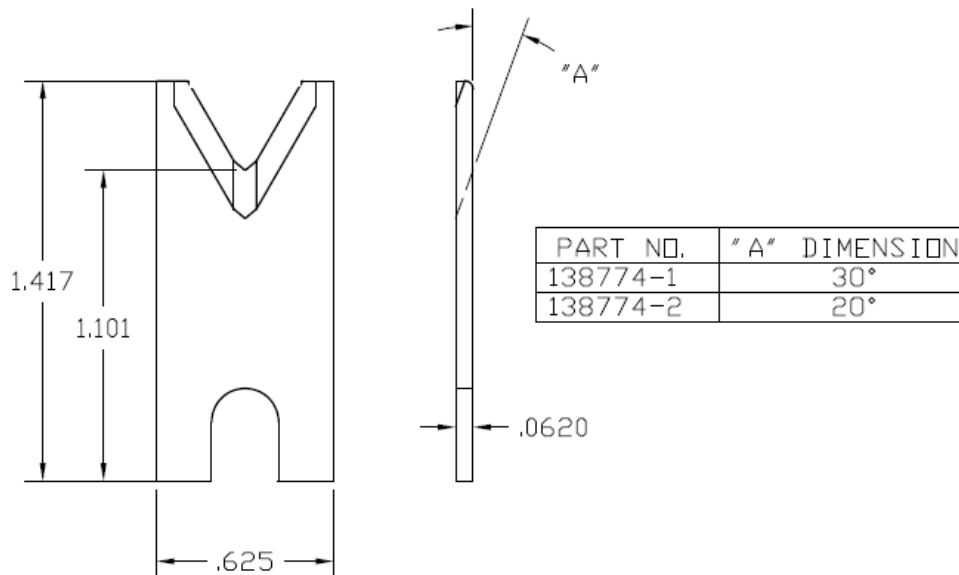
Dimensions on blade sketches are in inches.

Wire cut off blade



144954 Wire cut off blade, this is the one in the middle.

Universal V style stripping blades



138774-1 Strip blade "V" 30 degree, standard. These can be generally used to process wires 26 to 10 AWG.

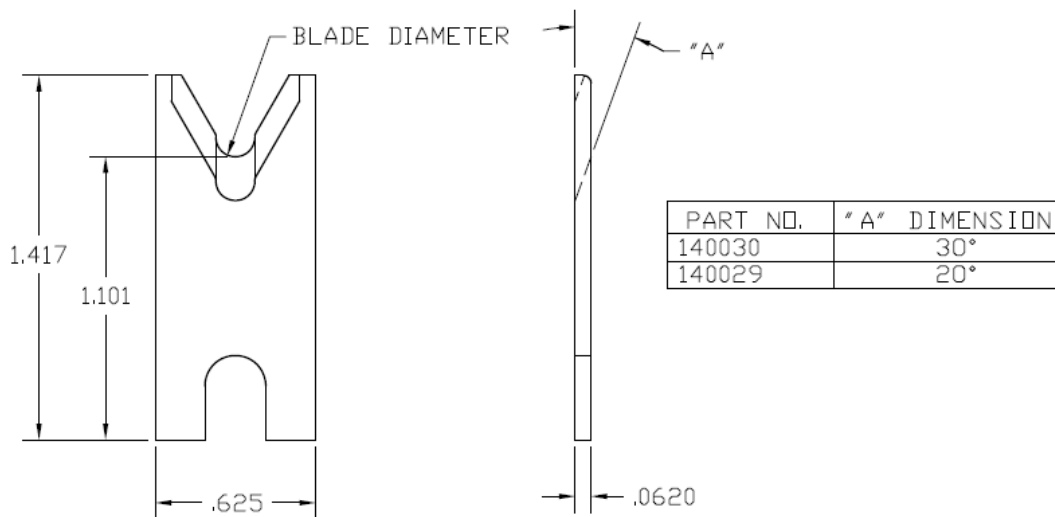
138774-2 Strip blade "V" 20 degree, the 20 degree edge has a steeper angle and may work better for some types of insulation like silicon or Teflon. The downside is that they do not stay sharp as long as 30 degree would.

True radius style stripping blades

The sharp edge is ground to a half circle whose radius approximates awg wire size. The entry angle lines intersect the half circle at the quadrant points. This type of blade, when closed, presents a true circle profile.

Advantages: this type of blade is excellent for precise and clean jacket removal because it combines the scissor-like shearing action of the by-pass blade with the exact hole profile matching a conductor gauge. Excellent for thin wall cross-link PVC and most rubbery or elastic insulations (thin or thick wall).

Disadvantages: shut height cannot be modified to process adjacent wire sizes. Off center wire condition has to be considered when choosing blade size.



140030-xxx Strip blade, radius style 30 degree, the dash number is the diameter of the hole in the blade in inches. Example -028 is .028 inches

Dash #	millimeters				
-020	0.508	-112	2.845	-300	7.620
-024	0.610	-118	2.997	-320	8.128
-032	0.813	-125	3.175	-340	8.636
-039	0.991	-130	3.302	-360	9.144
-043	1.092	-140	3.556	-380	9.652
-047	1.194	-152	3.861	-400	10.160
-055	1.397	-160	4.064	-420	10.668
-067	1.702	-175	4.445		
-070	1.753	-200	5.080		
-078	1.829	-220	5.588		
-088	2.235	-240	6.096		
-090	2.286	-260	6.604		

-102	2.591	-280	7.112		
------	-------	------	-------	--	--

140029-xxx Strip blade, radius style 20 degree. The 20 degree edge has a steeper angle and may work better for some types of insulation like silicon or Teflon. The downside is that they do not stay sharp as long as 30 degree would.

Dash #	millimeters				
-020	0.508	-088	2.235	-240	6.096
-024	0.610	-090	2.286	-260	6.604
-028	0.711	-102	2.591	-280	7.112
-032	0.813	-112	2.845	-300	7.620
-039	0.991	-118	2.997	-320	8.128
-043	1.092	-125	3.175	-340	8.636
-047	1.194	-130	3.302	-360	9.144
-052	1.321	-140	3.556	-380	9.652
-055	1.397	-152	3.861	-400	10.160
-062	1.575	-160	4.064	-420	10.668
-067	1.702	-175	4.445		
-070	1.753	-200	5.080		
-078	1.829	-220	5.588		

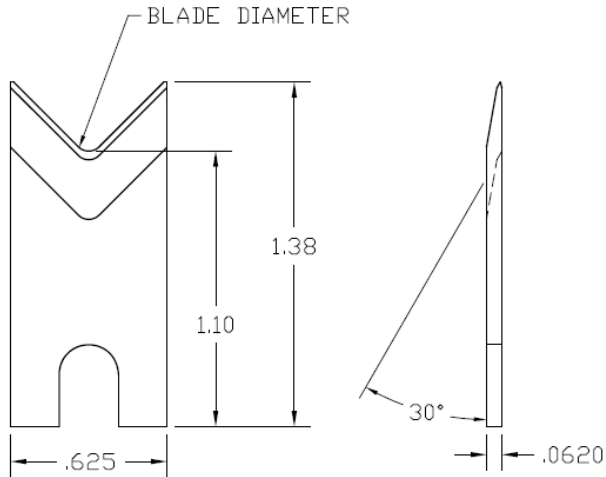
The maximum outside wire diameter on a CR11 is 5.5mm, blade sizes larger than this are listed for reference only.

Universal tangent radius style stripping blades

The sharp edge is ground to an arc whose radius approximates awg wire size. The entry angle lines meet the arc at a tangent point. This type of blade, when closed, presents a diamond shaped edge profile.

Advantages: by adjusting cutter head shut height, (if insulation material and wall thickness allow), you can process adjacent wire extrusions.

Disadvantages: inadequate for processing thin wall and/or hard insulations such as cross-link or fiberglass jackets.

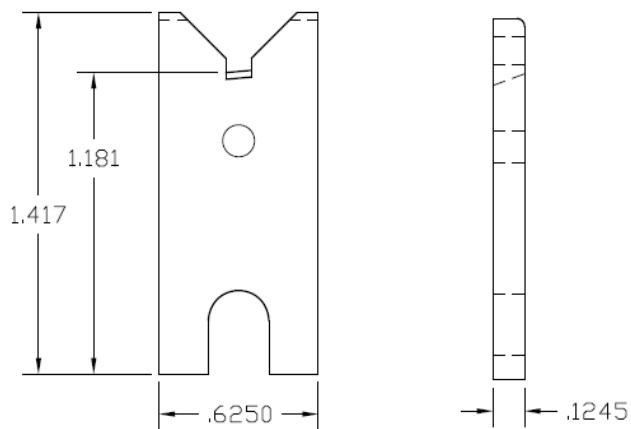


123238-x Strip blade, tangent radius style 30 degree

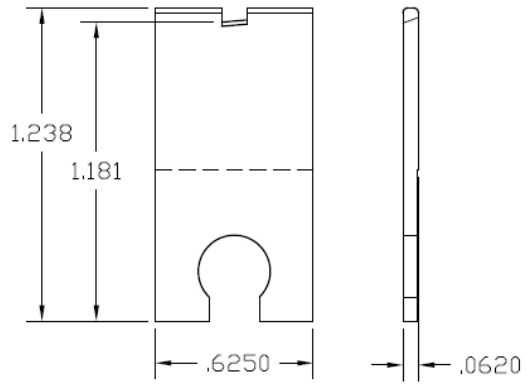
Dash #	Diameter inches (millimeters)				
-1	0.008 (0.2)	-3	0.059 (1.5)	-10	0.138 (3.5)
-7	0.020 (0.5)	-4	0.079 (2.0)	-6	0.157 (4.0)
-9	0.028(0.7)	-8	0.110 (2.8)		
-2	0.039 (1.0)	-5	0.118 (3.0)		

Special fiber cutting blades

These blades are only for CR11's equipped with the fiber cutting blade holder assembly 4-145038



145376 Upper cutoff blade



145027 Lower cutoff blade