

CS326 Replacement Belts and Wire Feed Wheels

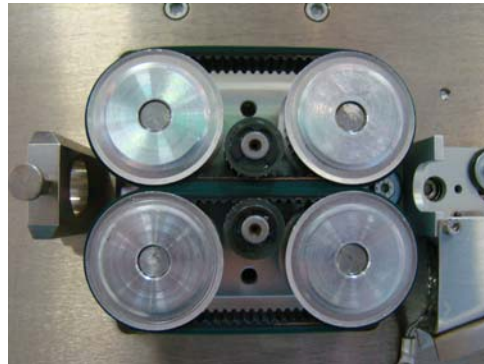
REV 11 10/16/2016

CS 326 Standard drive (15 mm wide) 4pc required 2 for infeed, 2 for outfeed

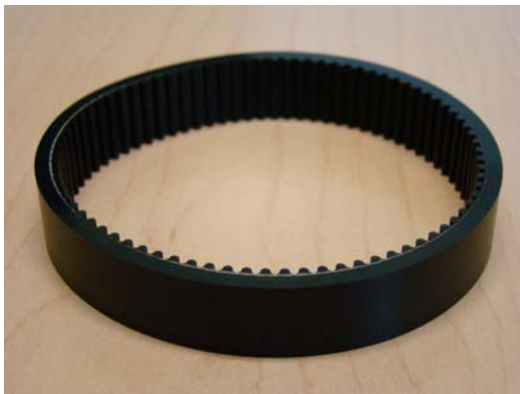
Wire feed belts. If the machine is currently equipped with feed wheels then order 2pc of assembly 2-136974-510, to convert the wheels to belt pulleys.



136968 Green (Standard)



2-136974-510 green belts and pulleys



138905 Black (Harder)



138906 Red (Softer)

The green belt is the best overall belt to use.

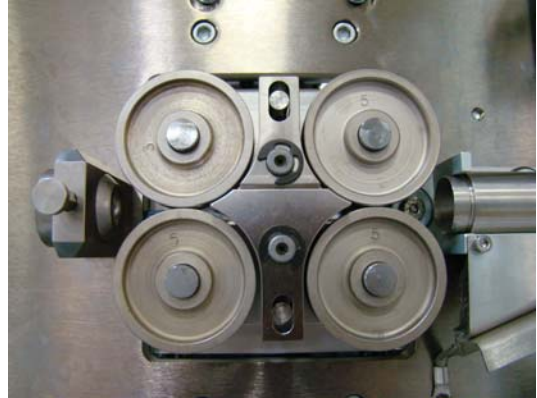
The red belt is a softer belt that will grip better on smooth wires such as Teflon, but it will also wear out faster.

The black belt is a harder belt that will not wear as quickly but it will not grip the wire as well.

Wire feed wheels.



137853

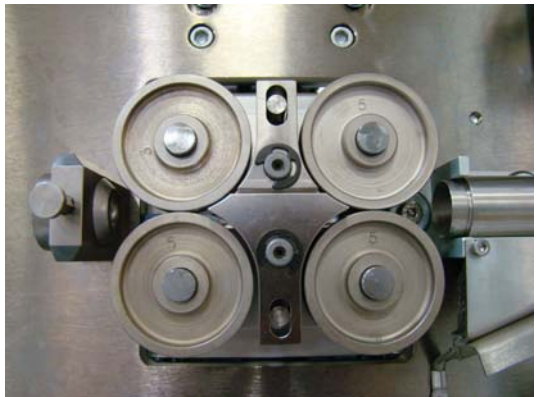


2-138112-500

Fine knurl wheel 137853 This wheel is most common, it can minimize printed ink distortion, as compared to belts and sometimes grip the wire better. The disadvantage compared to belts is that it may leave knurl marks along the length of the wire, also feed pressure and outfeed closure gap settings become more critical. To convert a belt machine to this type of wheel order 2pc of assembly 2-138112-500



136719

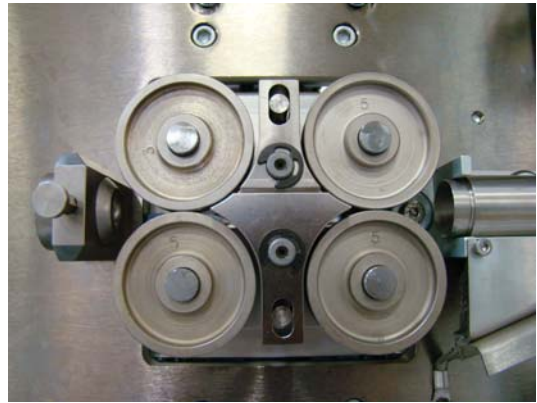


4-136975-500

Course knurl wheel 136719 This wheel can grip the wire better and can minimize printed ink distortion, as compared to belts. The disadvantage compared to belts is that it will leave knurl marks along the length of the wire, also feed pressure and outfeed closure gap settings become more critical. To convert a belt machine to this type of wheel order 1pc of assembly 2-137429-560 which contains 2pc of assembly 4-136975-500



144484



4-145692-500

Metal spray wheel 144484 This wheel can minimize printed ink distortion, as compared to belts. Compared to knurled wheels there will be less chance of leaving a mark on the length of the wire. The disadvantage is that it can build up with plastic from the wire and it harder to clean out than the knurl wheels. To convert a belt machine to this type of wheel order 2pc of assembly 4-145692-500



5-145766



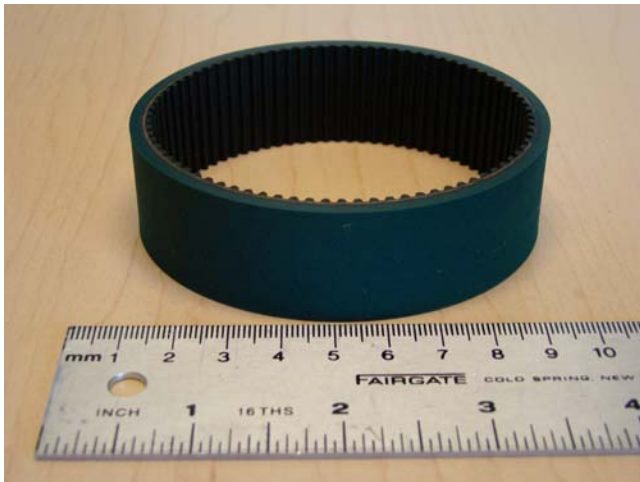
4-145767-500

Urathane belted wheel 5-145766 This wheel can lower printed ink distortion, as compared to belts. This type of roller will not wrinkle small flexible wire. To convert a belt machine to this type of wheel order 2pc of assembly 4-145767-500

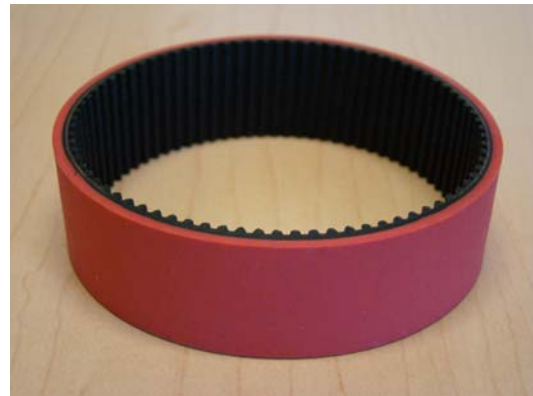


145033 Replacement belt for wheel 5-145766

CS 326 Wide belts (25 mm wide) 4pc required 2 for infeed 2 for outfeed
These are only for use with a CS326 that is equipped with 25mm pulleys



137870 Green (Standard)



143465 Red (Softer)

143682 Black (Harder) – this part is not normally stocked

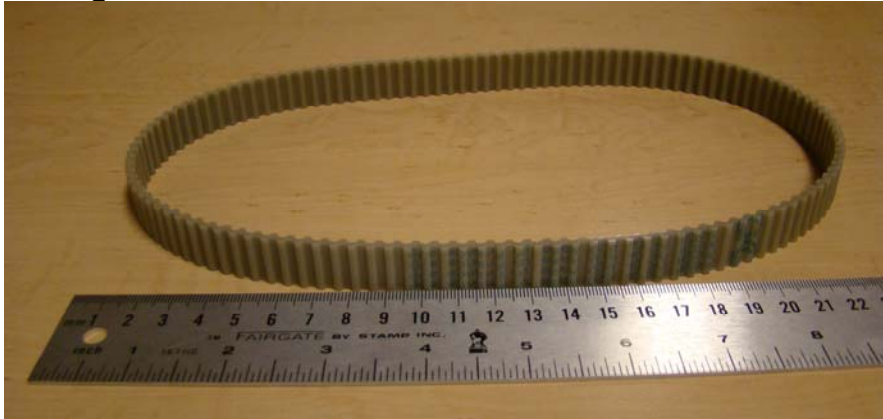
CS 326 Belts for 3 wire machine (8.3 mm wide) 12pc required 6 for infeed 6 for outfeed

These are only for use with a CS326 that is equipped with 25mm pulleys. If you use 3 individual 8.3mm belts on each pulley, rather than one 25mm belt the length for all 3 wires will be more consistent.



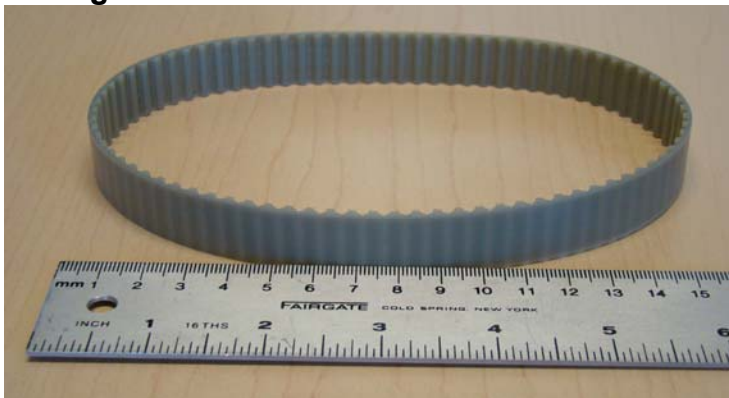
146689 Green (Standard)

Timing belt used to connect the feed motor to the wire feed mechanism.



916-285 timing belt 16mm wide

Timing belt used to connect the cut motor to the cutter mechanism.



916-308 timing belt 16mm wide

Timing belt used to connect the encoder drive wheel to the feed drive



917-233 Belt for machines with wire feed belts, 6mm wide
919-069 Belt for machines with steel feed wheels, 6mm wide



916-752 Belt to connect the encoder to the measuring wheel, 4mm wide