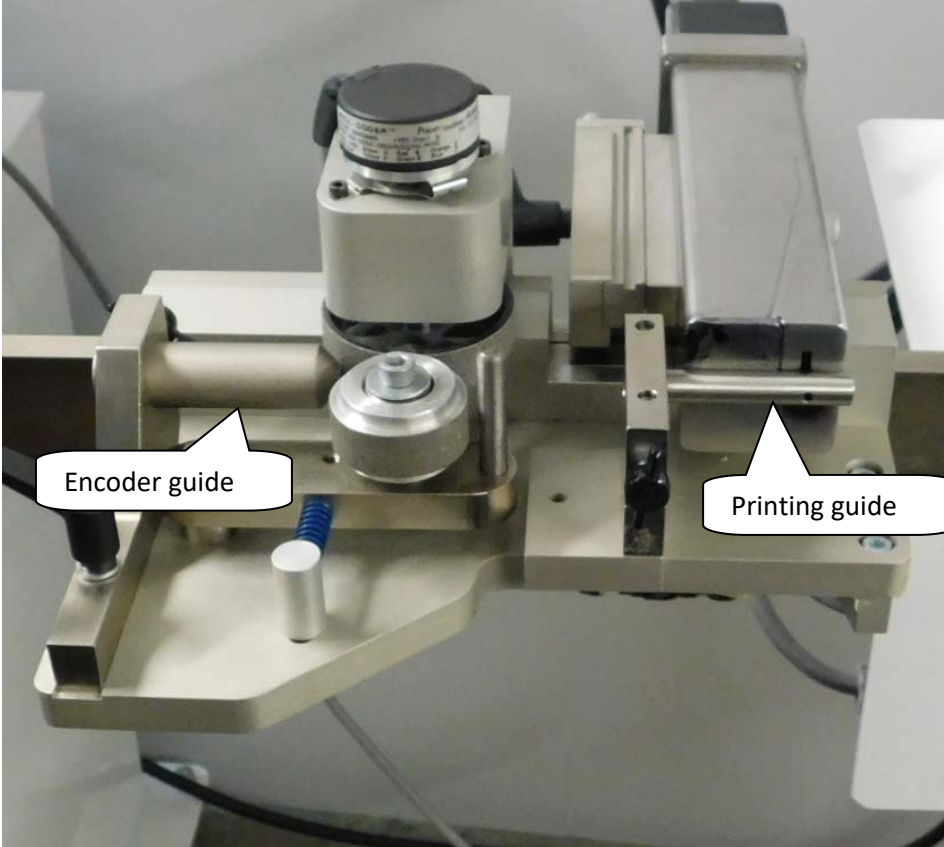


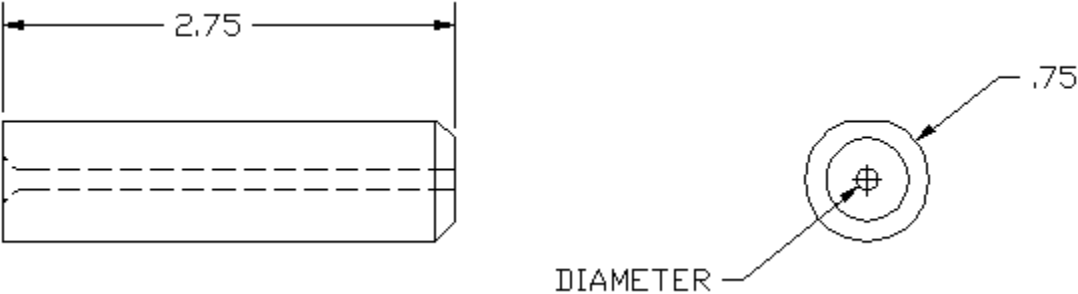
CS326 and CR bar mounted head, Guides for Imaje 9450 printing

REV 0 10/19/2016



CS326 mounting.

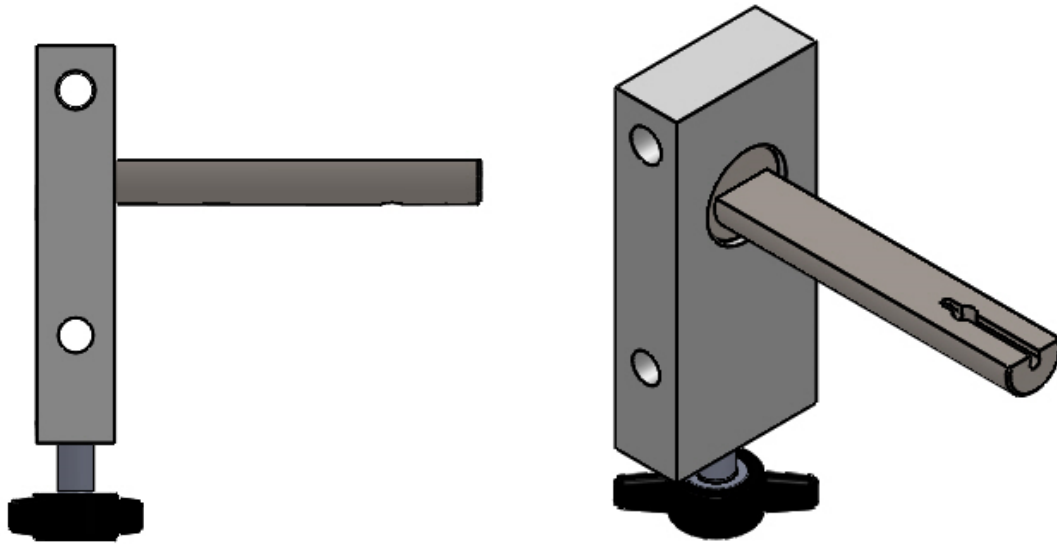
Encoder guide, for CS326 mounting only



137731-x Encoder guide. Normally you can use a fairly large guide even for smaller wires.

Part number	Inner Diameter inches	Inner Diameter mm
137731-1	0.125	3.17
137731-2	0.188	4.77
137731-3	0.250	6.35
137731-4	0.375	9.52
137731-5	0.500	12.7

Printing Guide, round wire



5-148736-X Printing guide (extended series). For best print results this guide should be .010 - .020 inches (.25-.51mm) larger than the wire. Sizes larger than 5.5mm are for the CS326 only.

Part number	Inner Diameter inches	Inner Diameter mm
5-148736-100	0.039	1.00
5-148736-125	0.049	1.25
5-148736-150	0.059	1.50
5-148736-175	0.069	1.75
5-148736-200	0.079	2.00
5-148736-225	0.088	2.25
5-148736-250	0.098	2.50
5-148736-275	0.108	2.75
5-148736-300	0.118	3.00
5-148736-350	0.138	3.50
5-148736-400	0.157	4.00
5-148736-450	0.177	4.50
5-148736-500	0.197	5.00
5-148736-550	0.216	5.50

5-148736-600	0.236	6.00
5-148736-650	0.256	6.50
5-148736-700	0.276	7.00
5-148736-750	0.295	7.50
5-148736-800	0.315	8.00
5-148736-850	0.335	8.50
5-148736-900	0.354	9.00
5-148736-950	0.374	9.50
5-148736-1000	0.394	10.00
5-148736-1050	0.413	10.50
5-148736-1100	0.433	11.00
5-148736-1150	0.453	11.50
5-148736-1200	0.472	12.00
5-148736-1250	0.492	12.50