

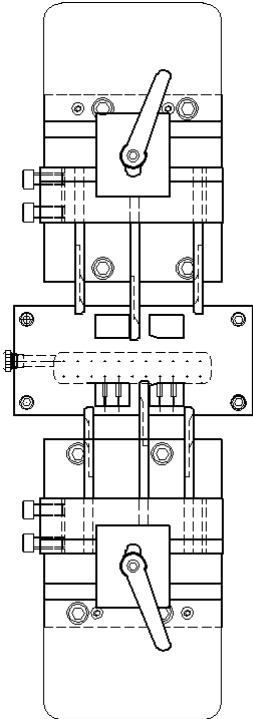
CS327 Blades for 3 blade cutterhead

REV 0 4/15/2011

Table of Contents

- Wire cut off blades..... 2
 - Standard cutoff blades..... 2
 - Flat material cutoff blade..... 3
- Wire stripping blades..... 3
 - Universal V style stripping blades..... 3
 - True radius style stripping blades..... 4
 - Tangent radius style stripping blades..... 5
 - Parallel cord stripping blades..... 7
 - Oval strip blades..... 8

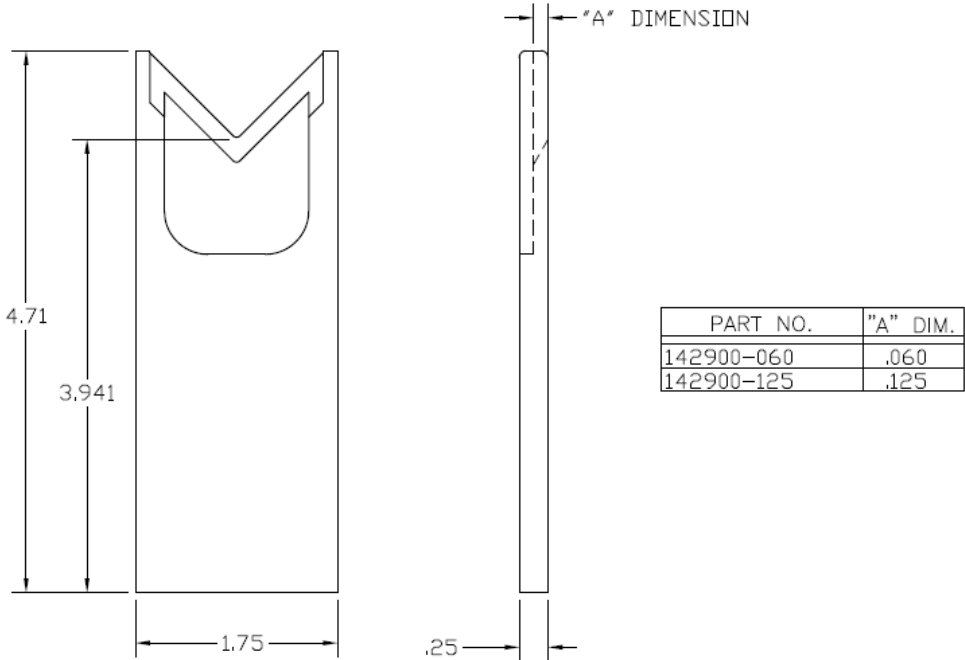
Dimensions on blade sketches are in inches.



View of 3 blade machine.

Wire cut off blades

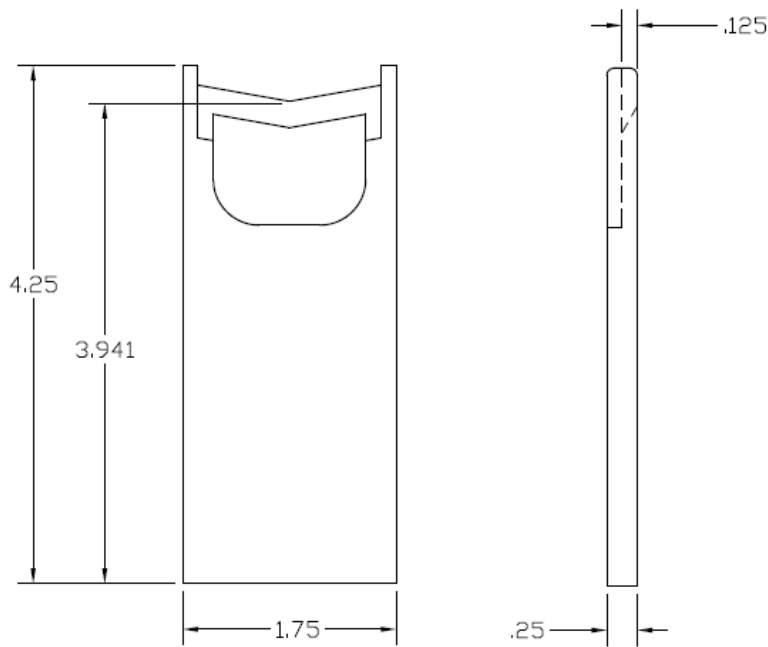
Standard cutoff blades



142900-125 Wire cut off blade. This is the standard blade for all general cutting.

142900-060 Wire cut off blade. This blade is has a relief cut out so the wire strands do not cone out as noticeably as with the -125 blade, and the blade will cut through easier. It is mainly for larger diameter wires with fine stranding.

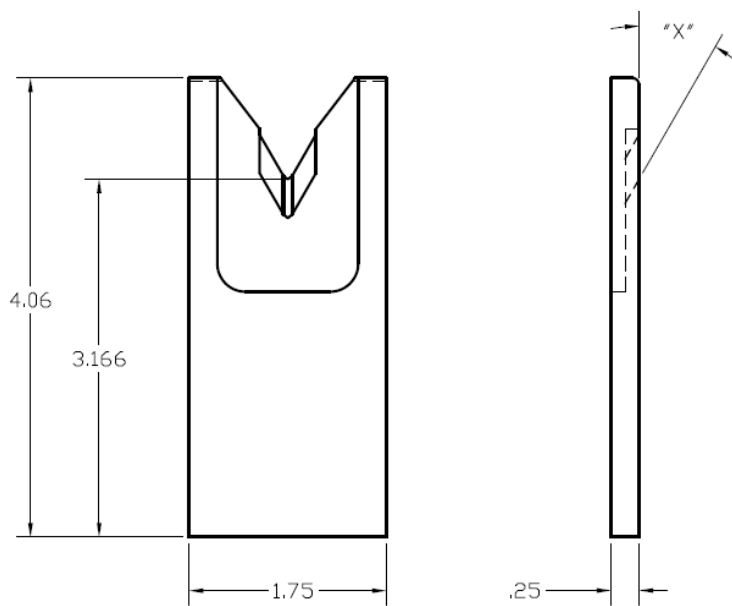
Flat material cutoff blade



143058 Flat wire cut off blade.

Wire stripping blades

Universal V style stripping blades



PART NO.	"X" ANGLE
142945-1	30 DEG.
142945-2	20 DEG.

142945-1 Strip blade "V" 30 degree.

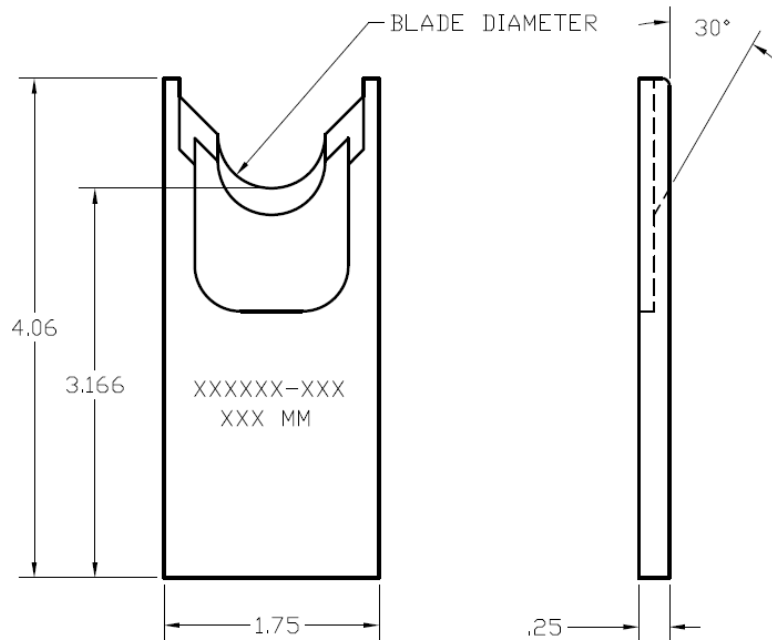
142945-2 Strip blade “V” 20 degree, the 20 degree edge has a steeper angle and will give a very clean cut. The downside is that they do not stay sharp as long as 30 degree would.

True radius style stripping blades

The sharp edge is ground to a half circle whose radius approximates awg wire size. The entry angle lines intersect the half circle at the quadrant points. This type of blade, when closed, presents a true circle profile.

Advantages: this type of blade is excellent for precise and clean jacket removal because it combines the scissor-like shearing action of the by-pass blade with the exact hole profile matching a conductor gauge. Excellent for thin wall cross-link PVC and most rubbery or elastic insulations (thin or thick wall).

Disadvantages: shut height cannot be modified to process adjacent wire sizes. Off center wire condition has to be considered when choosing blade size.



142337-xxx Strip blade, radius style 30 degree, the dash number is the diameter of the hole in the blade in inches. Example -028 is .028 inches

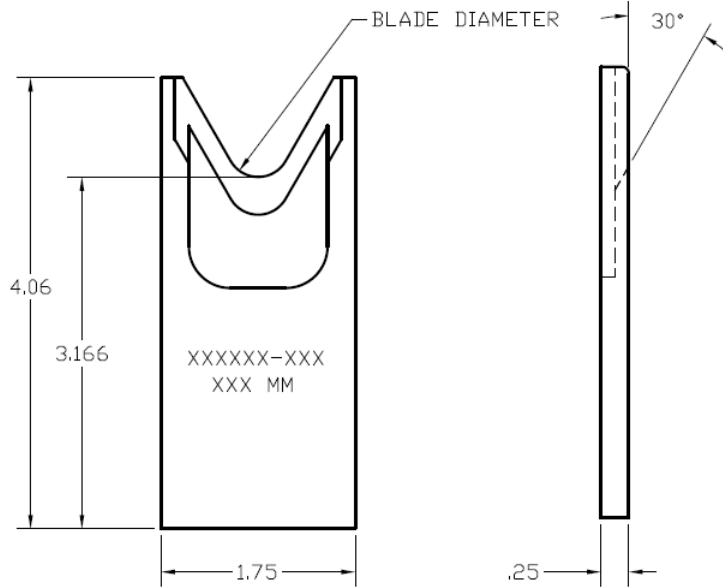
Dash #	millimeters				
-024	0.61	-300	7.62	-680	17.27
-031	0.78	-320	8.13	-700	17.78
-039	0.99	-340	8.64	-720	18.29
-047	1.19	-360	9.14	-740	18.80
-055	1.40	-370	9.40	-760	19.30
-067	1.70	-380	9.65	-780	19.81
-078	1.98	-400	10.16	-800	20.32
-090	2.29	-410	10.41	-820	20.83
-102	2.59	-420	10.67	-840	21.34
-112	2.84	-440	11.18	-860	21.84
-125	3.17	-460	11.68	-880	22.35
-140	3.56	-480	12.19	-900	22.86
-150	3.81	-500	12.70	-920	23.37
-160	4.06	-520	13.21	-940	23.88
-175	4.45	-540	13.72	-960	24.38
-200	5.08	-560	14.22	-980	24.89
-220	5.59	-580	14.73	-1000	25.40
-240	6.10	-600	15.24	-1010	25.65
-260	6.60	-620	15.75	-1170	29.72
-270	6.86	-640	16.26		
-280	7.11	-660	16.76		

Tangent radius style stripping blades

The sharp edge is ground to an arc whose radius approximates awg wire size. The entry angle lines meet the arc at a tangent point. This type of blade, when closed, presents a diamond shaped edge profile.

Advantages: by adjusting cutter head shut height, (if insulation material and wall thickness allow), you can process adjacent wire extrusions. It also tips the slug less as it is pulled from the wire, sometimes reducing the amount of scrapping on the conductors.

Disadvantages: inadequate for processing thin wall and/or hard insulations such as cross-link or fiberglass jackets.

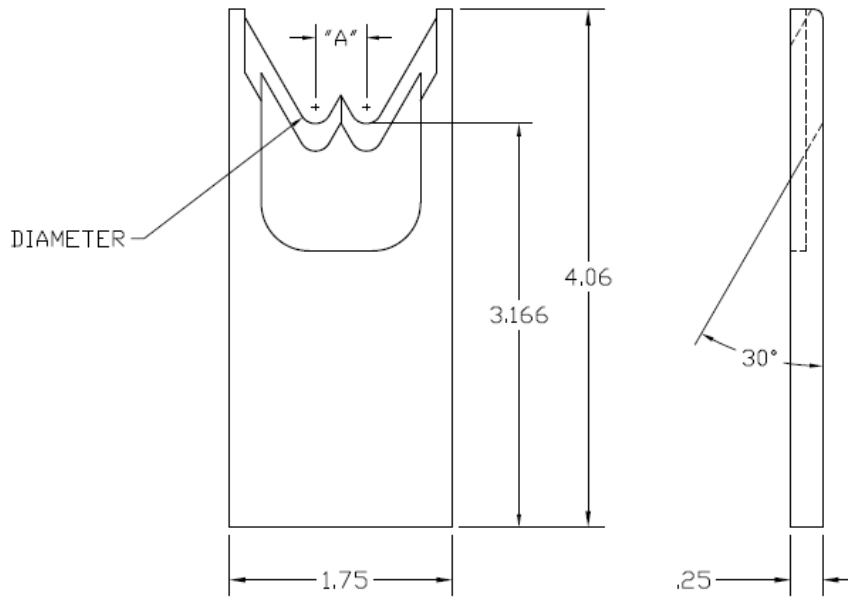


143066-xxx Strip blade, tangent radius style 30 degree. The dash number is the diameter of the hole in the blade in inches. Example -028 is .028 inches

Dash #	millimeters				
-024	0.61	-280	7.11	-660	16.76
-031	0.78	-300	7.62	-680	17.27
-039	0.99	-320	8.13	-700	17.78
-047	1.19	-340	8.64	-720	18.29
-055	1.40	-360	9.14	-740	18.80
-067	1.70	-380	9.65	-760	19.30
-078	1.98	-400	10.16	-780	19.81
-090	2.29	-420	10.67	-800	20.32
-102	2.59	-440	11.18	-820	20.83
-112	2.84	-460	11.68	-840	21.34
-125	3.17	-480	12.19	-860	21.84
-140	3.56	-500	12.70	-880	22.35
-150	3.81	-520	13.21	-900	22.86
-160	4.06	-540	13.72	-920	23.37
-175	4.45	-560	14.22	-940	23.88
-200	5.08	-580	14.73	-960	24.38
-220	5.59	-600	15.24	-980	24.89
-240	6.10	-620	15.75		
-260	6.60	-640	16.26		

Parallel cord stripping blades

These blades are for stripping 2 or more conductor flat cable. Special wire guides may be required to hold the wire flat as it runs through the machine. Typically each different type of cord needs a different blade size. Contact the Artos sales department for information on how to submit a sample wire for blade sizing and design.



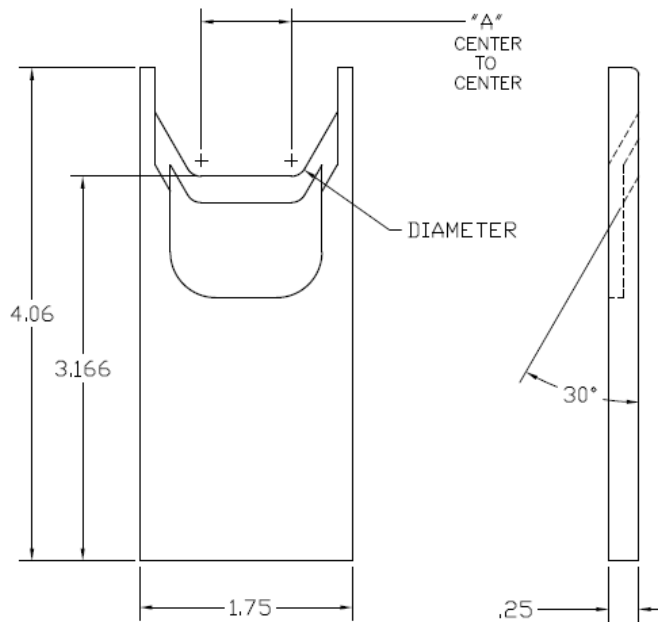
123723-x Parallel cord stripping blade

-x	Mark on blade	Qty of "V"s	Diameter inch	"A" dimension inch	Diameter mm	"A" dimension mm
-1	2V-250-400	2	.250	.400	6.35	10.16
-2	2V-062-108	2	.062	.108	1.57	2.74
-3	2V-076-120	2	.076	.120	1.93	3.05
-4	2V-172-325	2	.172	.325	4.37	8.26
-5	2V-350-530	2	.350	.530	8.89	13.46
-6	2V-052-135	2	.052	.135	1.32	3.43
-7	2V-096-195	2	.096	.195	2.44	4.95
-8	2V-076-170	2	.076	.170	1.93	4.32
-9	2V-120-205	2	.120	.205	3.05	5.21
-10	2V-156-325	2	.156	.325	3.96	8.26
-11	2V-172-365	2	.172	.365	4.37	9.27
-12	2V-210-385	2	.210	.385	5.33	9.78
-13	2V-250-420	2	.250	.420	6.35	10.67
-14	3V-062-105	3	.062	.105	1.57	2.67
-15	2V-156-360	2	.156	.360	3.96	9.14
-16	2V-280-485	2	.280	.485	7.11	12.32
-17	2V-280-460	2	.280	.460	7.11	11.68
-18	2V-096-225	2	.096	.225	2.44	5.72

-19	2V-120-240	2	.120	.240	3.05	6.10
-20	2V-225-350	2	.225	.350	5.72	8.89
-21	2V-270-410	2	.270	.410	6.86	10.41
-22	2V-042-125	2	.042	.125	1.07	3.18

Oval strip blades

This type of blade is for stripping the outer jacket off of a flat multi-conductor cord. Typically each different type of cord needs a different blade size. Contact the Artos sales department for information on how to submit a sample wire for blade sizing and design.



-x	Diameter inch	"A" dimension inch	Diameter mm	"A" dimension mm
-1	.130	.367	3.30	9.32
-2	.208	.601	5.28	15.27
-3	.260	.742	6.60	18.85
-4	.130	.117	3.30	2.97