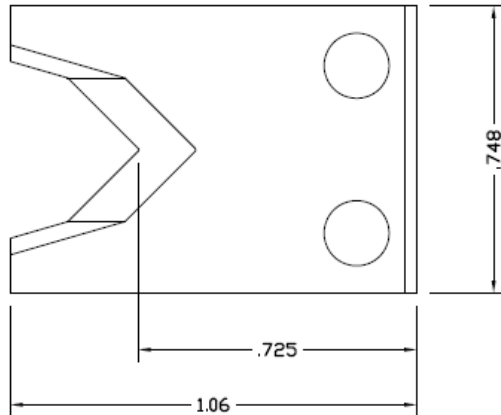


Blades for CS336, CS337 and CS338

REV 4 04/16/2015

V – style blades.

LB-1253 Standard V blade, 30 degree angle (sold in pairs)

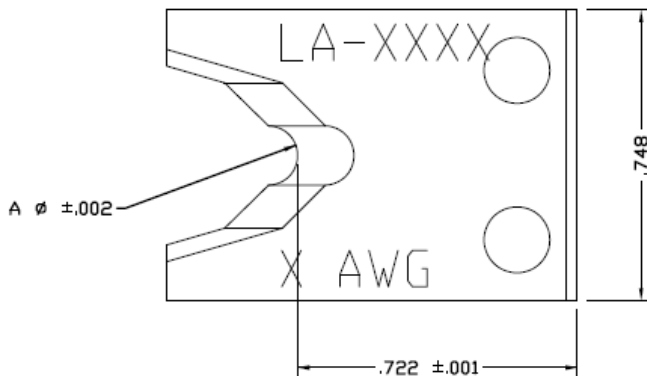


LB-1725 V blade, with TiN coating for longer life than a standard blade, 30 degree angle (sold in pairs)

True radius blades – standard series – A=diameter of cutting hole in blade (sold in pairs) The sharp edge is ground to a half circle whose radius approximates awg wire size. The entry angle lines intersect the half circle at the quadrant points. This type of blade, when closed, presents a true circle profile.

Advantages: this type of blade is excellent for precise and clean jacket removal because it combines the scissor-like shearing action of the by-pass blade with the exact hole profile matching a conductor gauge. Excellent for thin wall cross-link PVC and most rubbery or elastic insulations (thin or thick wall).

Disadvantages: shut height cannot be modified to process adjacent wire sizes. Off center wire condition has to be considered when choosing blade size.



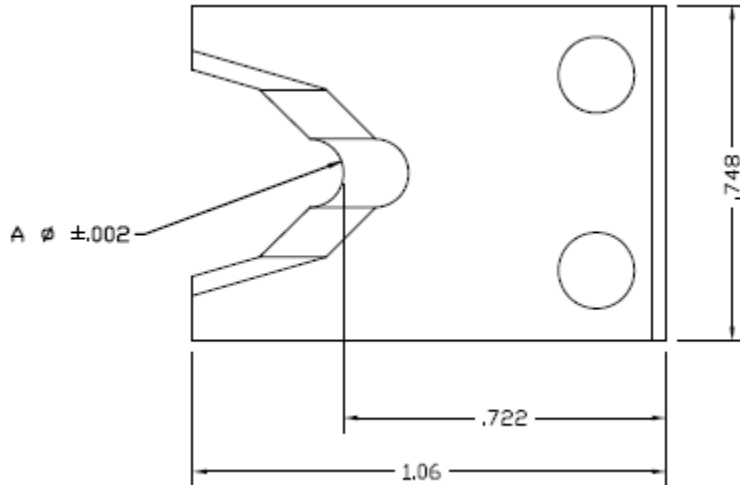
LA-4047 8 Ga. Size A=.153 (3.89mm)

LA-4048 10 Ga. Size A=.125 (3.18mm)

LA-3707 12 Ga. Size A=.097 (2.46mm)

- LA-3708** 14 Ga. Size A=.078 (1.98mm)
- LA-3709** 16 Ga. Size A=.063 (1.60mm)
- LA-3710** 18 Ga. Size A=.054 (1.37mm)
- LA-3711** 20 Ga. Size A=.044 (1.12mm)

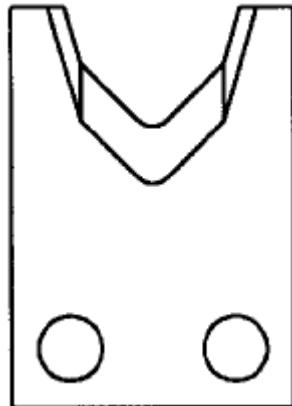
True radius blades – extended series – A=diameter of cutting hole in blade (sold individually)



A=mm	P/N	A=in
0.4	122324-26	.016in
0.5	122324-7	.020
0.6	122324-3	.024
0.7	122324-25	.028
0.9	122324-12	.035
1.0	122324-9	.039
1.1	122324-21	.043
1.2	122324-8	.047
1.3	122324-11	.051
1.4	122324-22	.055
1.5	122324-14	.059
1.6	122324-1	.063
1.7	122324-5	.067
1.8	122324-29	.071
1.9	122324-2	.075
2.0	122324-15	.079
2.2	122324-23	.087
2.3	122324-32	.091
2.4	122324-6	.094
2.5	122324-16	.098
2.6	122324-4	.102

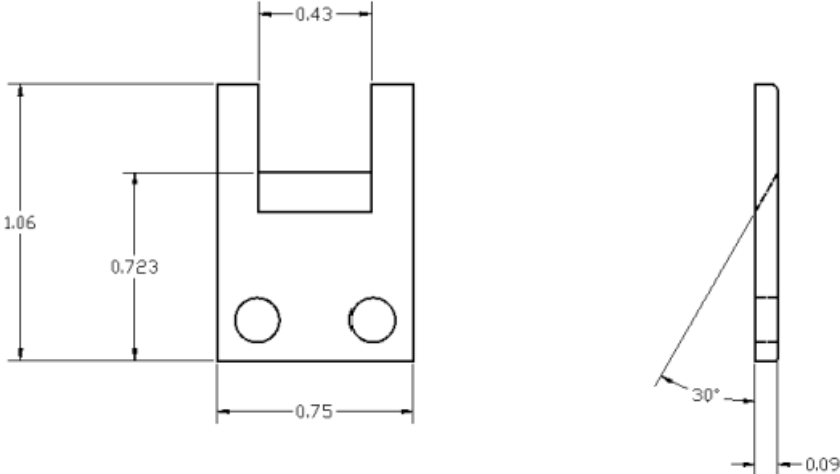
2.8	122324-27	.110
3.0	122324-17	.118
3.1	122324-28	.122
3.2	122324-13	.126
3.3	122324-30	.130
3.5	122324-18	.138
4.0	122324-19	.157
4.4	122324-10	.173
4.5	122324-20	.177
4.6	122324-33	.181
5.0	122324-24	.197
5.2	122324-31	.205

Tangent radius V strip blades (sold individually) The sharp edge is ground to an arc whose radius approximates awg wire size. The entry angle lines meet the arc at a tangent point. This type of blade, when closed, presents a diamond shaped edge profile. Advantages: by adjusting cutter head shut height, (if insulation material and wall thickness allow), you can process adjacent wire extrusions. Disadvantages: inadequate for processing thin wall and/or hard insulations such as cross-link or fiberglass jackets.



- 123022-1** 8 Ga. Size
- 123022-2** 10 Ga. Size
- 123022-3** 12 Ga. Size
- 123022-4** 14 Ga. Size
- 123022-5** 16 Ga. Size
- 123022-6** 18 Ga. Size
- 123022-7** 20 Ga. Size

Flat cutting blade (sold in pairs) The flat profile is for cutting only. This could be used for heat shrink or for cutting to length flat cable. Stripping cannot be done when using this blade.



122462 Flat cutting blade