

Calibration of PT-5 pull tester

REV 0 08/05/2016

Artos does not currently sell a calibration system for the PT-5 pull tester. If the customer has made his own calibration fixture for calibrating pull testers, he can use the CALIBRATION procedure explained in the PT-5 manual.

Returning the meter for calibration

It is important to note that it is not necessary to return the entire PT-5 for calibration. The meter of the PT-5 pull tester can be removed and returned in the instrument case that is provided with the pull tester.

The meter can be returned to Artos or it can be returned directly to the calibration company (recommended). It is not necessary to return the power adaptor or interface cable.

Before returning the meter you need to call and get a Return Number. They are going to ask for the Model number and Serial number.

The Model number is Series 7, the serial number is on the back of the meter.

The calibration company is:

Mark-10 Corporation

11 Dixon Avenue

Copiapue, NY 11726 USA

888-MARK-TEN (888-627-5836)

Tel: 631-842-9200

Fax: 631-842-9201 Model number and serial number is required.

Meter instrument case

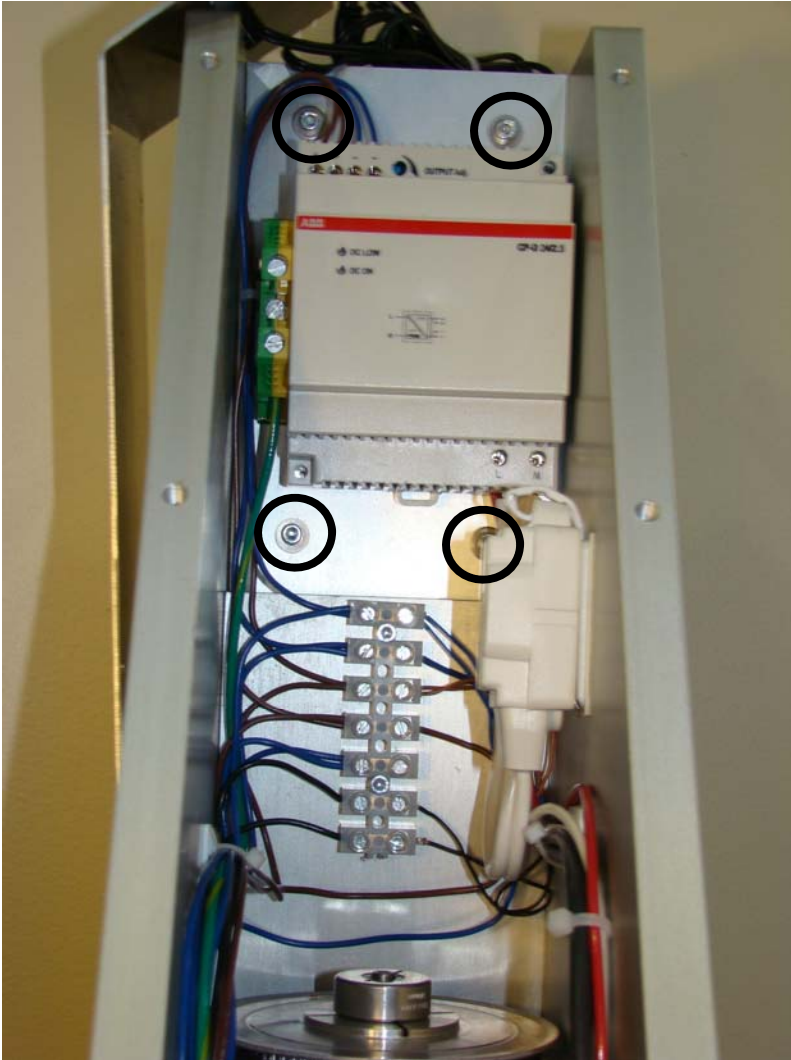


Removing the meter from the PT-5

1. Disconnect the power cord from the PT-5 pull tester
2. Remove the back panel.

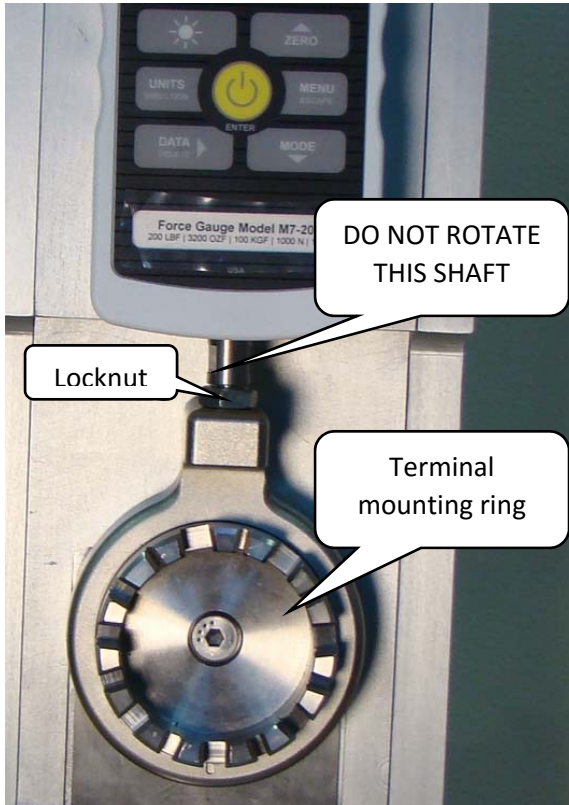


3. Remove the 4 screws that hold the meter onto the front panel.



4. Remove the terminal mounting ring. To loosen the locknut use one wrench on the meter shaft and one on the locknut.

CAUTION. DO NOT ROTATE THE SHAFT THAT GOES INTO THE METER, THIS WILL CAUSE DAMAGE TO THE METER.



It is not necessary to return the power adaptor or interface cable.