

Devices commonly used with the CR series machines

REV 0 04/19/2015

For technical information concerning these products contact Artos Engineering. If you are considering ordering one of these items contact Artos sales to get all the proper ordering numbers required.

WM-6 Hot stamp unit



KIP-20 Hot stamp unit



Brady Wraptor label applicator



Imaje 9040 printer



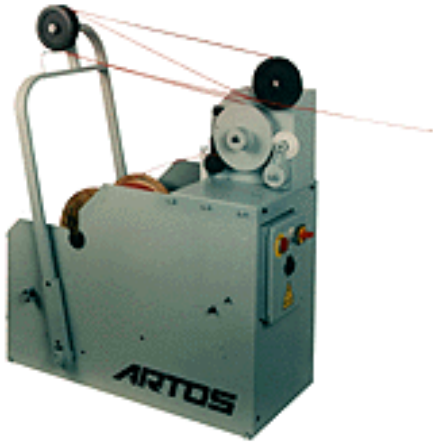
HF-15A Clinton spark tester



CD-19 coiling bowl for use with CR11



PF-6 Pre-Feeder



CD-21 coiling bowls for CR22C and CR22D



PF-10 Pre-Feeder for spools up to 2500lbs.



CD-20 2M Linear roll up collector for CR11



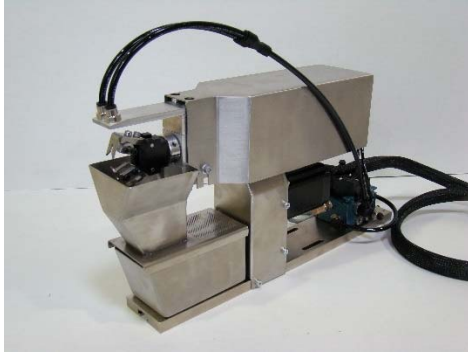
PF-11 Pre-feeder for loose bundle wires.



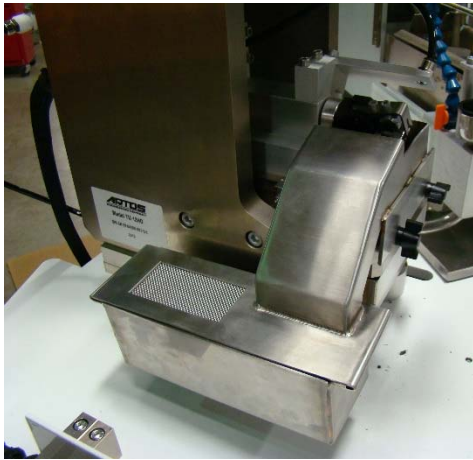
CD-21 2M Linear roll up collector for CR22c and CR22d



TW-2 Stand alone twister



TW-3 In press twister



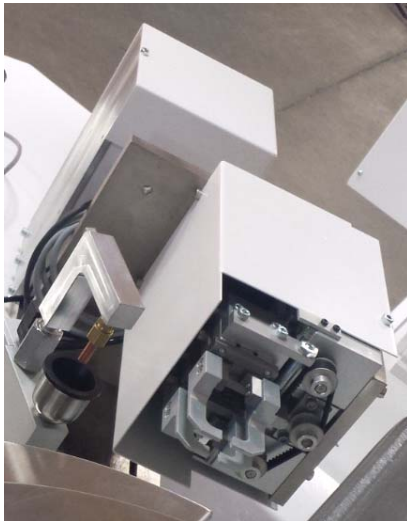
SLU-N Pawomat seal applicator



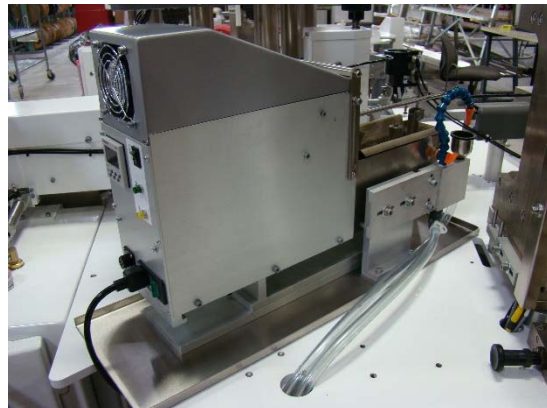
ASM400 Airstorm seal applicator



DB-2 Doubling unit



SD-1 Solder pot and flux unit



CRM03 Loose pin crimper



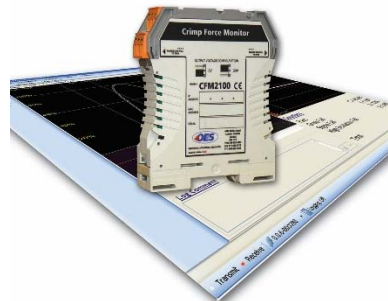
Wire Master, Laser stripping unit



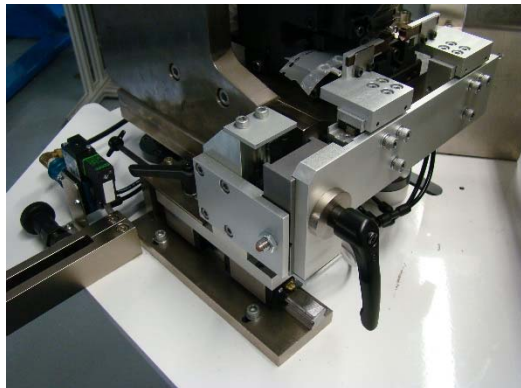
BD-4 Wire burning unit



CFM2100 crimp force monitor



Wire funnel for AMP closed barrel Mylar tape applicators. 5-146259



WT3-200 Pull tester



PT-5 Pull tester



Image S8 printer. Discontinued



LPA56B Laser profile analyzer for seal placement inspection



PF-7 Pre-Feeder. Discontinued



PT3 and PT3A pull testers. Discontinued.



Additional items that are available for the CR series machine. The technical information for these devices can be found in the CR manual and drawing book.

Micrometer, see drawing 5-144941, 5-147190 or 5-147732 depending on machine.



Indicator, see drawing 5-144941, 5-147190 or 5-147732 depending on machine.



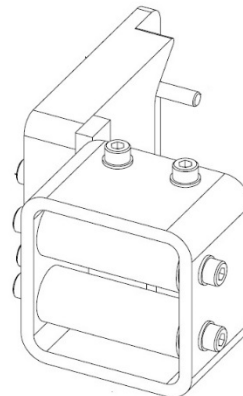
Sencor, See drawing 5-145494



Multi-direction infeed, 5-145772



Roller infeed 5-146773 for guiding the wire into the straightener bar.



Bar code scanner



Label printer



Cart assembly



Paper take up



4 meter collector



Programmable Z-axis

