

PF-10 SPECIFICATIONS

REV 5 10/13/2016

Spool Specifications for standard PF-10

Maximum spool weight 2500 Lbs (1134Kg)

Maximum spool flange diameter 48 inches (1220mm)

Maximum spool width 38 inches (965mm)

Electrical Specifications

PF-10 low voltage version

200-240 VAC 50/60hz 3 Phase 25 amps per circuit.

The internal transformer can be tapped for

200

208

230

PF-10 high voltage version

380-480 VAC 50/60hz 3 Phase 12 amps per circuit.

The internal transformer can be tapped for

380

415

460

Wire diameter

The wire guide wheels have a diameter of 1.6 inches (40.7mm)

Payout Rate

Adjustable up to 2M/Sec (394Ft./Min)

Maximum spool RPM

141 max RPM

Wire accumulation

37inches (940mm) when positioned according to drawing 6-146661

Mechanical

Overall dimensions

Guard closed

126" (3200mm) long x 57" (1448mm) deep x 58" (1473mm) high

Guard open

136" (3454mm) long x 57" (1448mm) deep x 96" (2438mm) high

Distance from floor to center of reel bar

Down position: 9.5" (242mm)

Up position: 26" (635mm)

Reel bar assembly 5-147051 dimensions.

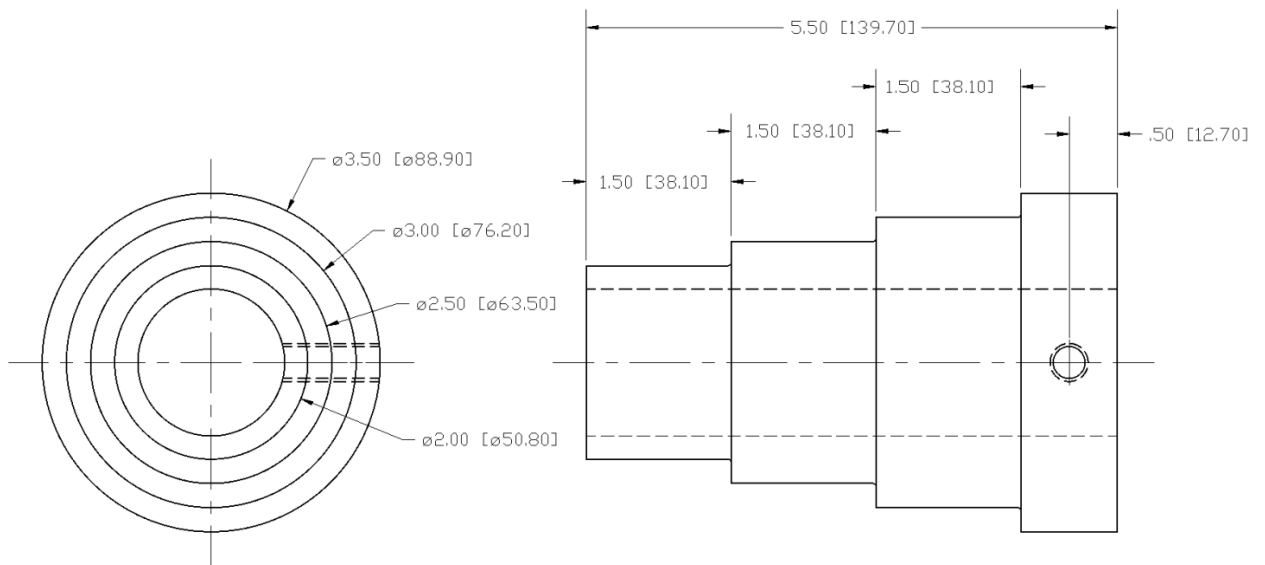
This bar is 1" (25.4mm) diameter

This bar does not use a wire cone. It only has 2 set collars to keep the spool from sliding around on the bar.

The distance from the center of the spool to the center of the drive hole can be 2.5-12" (64 mm-305mm).

Reel bar assembly 5-146416 dimensions. (included with machine)

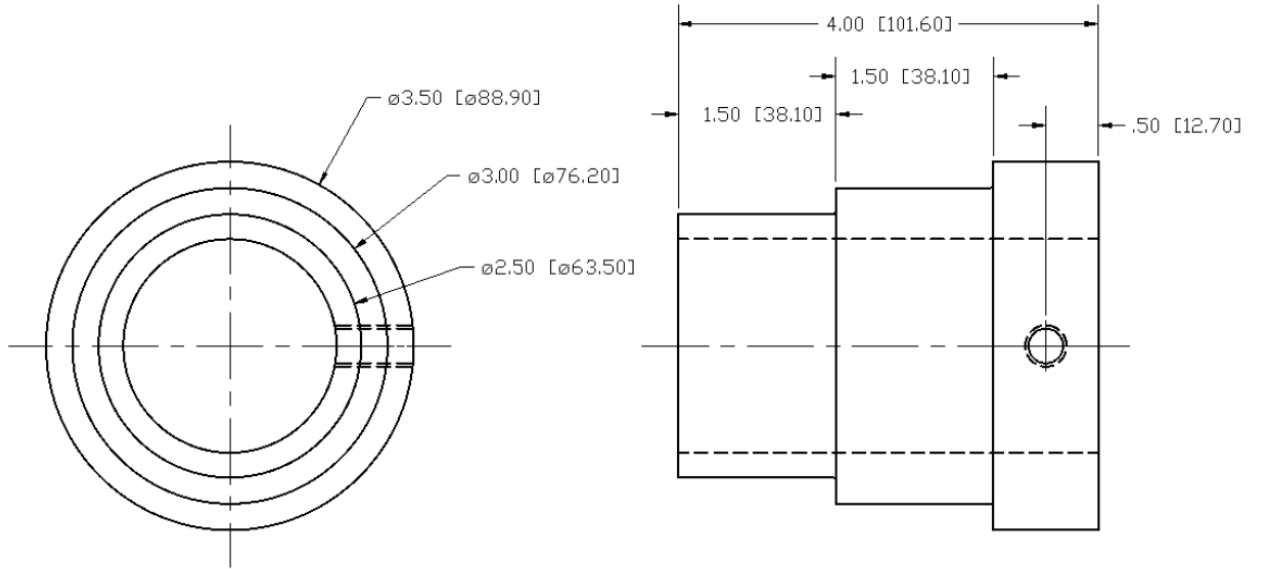
This bar is 1.5" (38.1mm) in diameter, the wire cone part number is 145920



The distance from the center of the spool to the center of the drive hole can be .053-12" (89 mm-305mm).

Reel bar assembly 5-146415 dimensions. (included with machine)

This bar is 2" (50.8mm) in diameter, the wire cone number is 145919



The distance from the center of the spool to the center of the drive hole can be .053-12" (89 mm-305mm).

Shipping

Weight 2250Lbs (1020Kg)

Size 137" (3480mm) long x 75" (1905mm) deep x 82" (2083mm) high